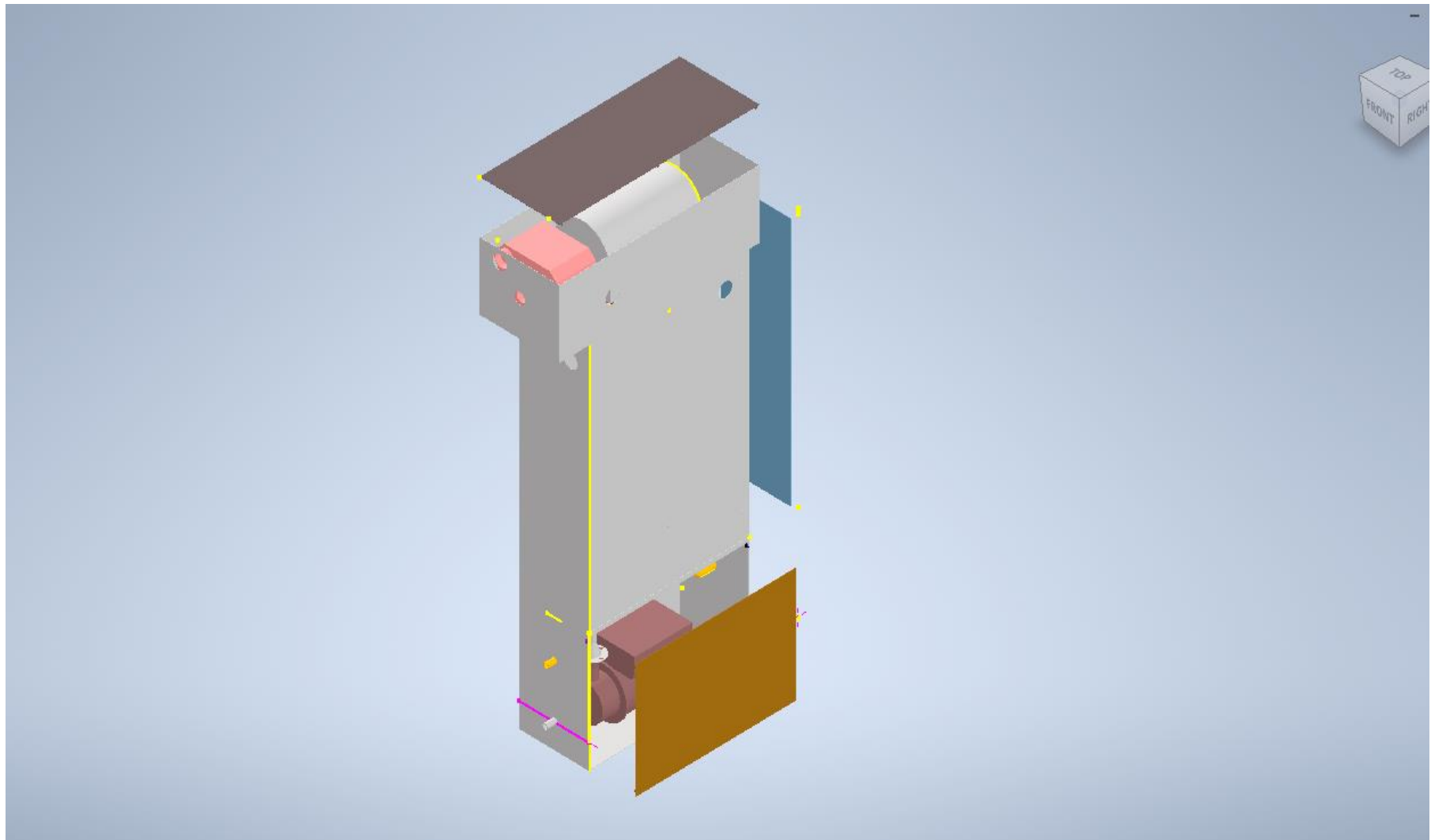
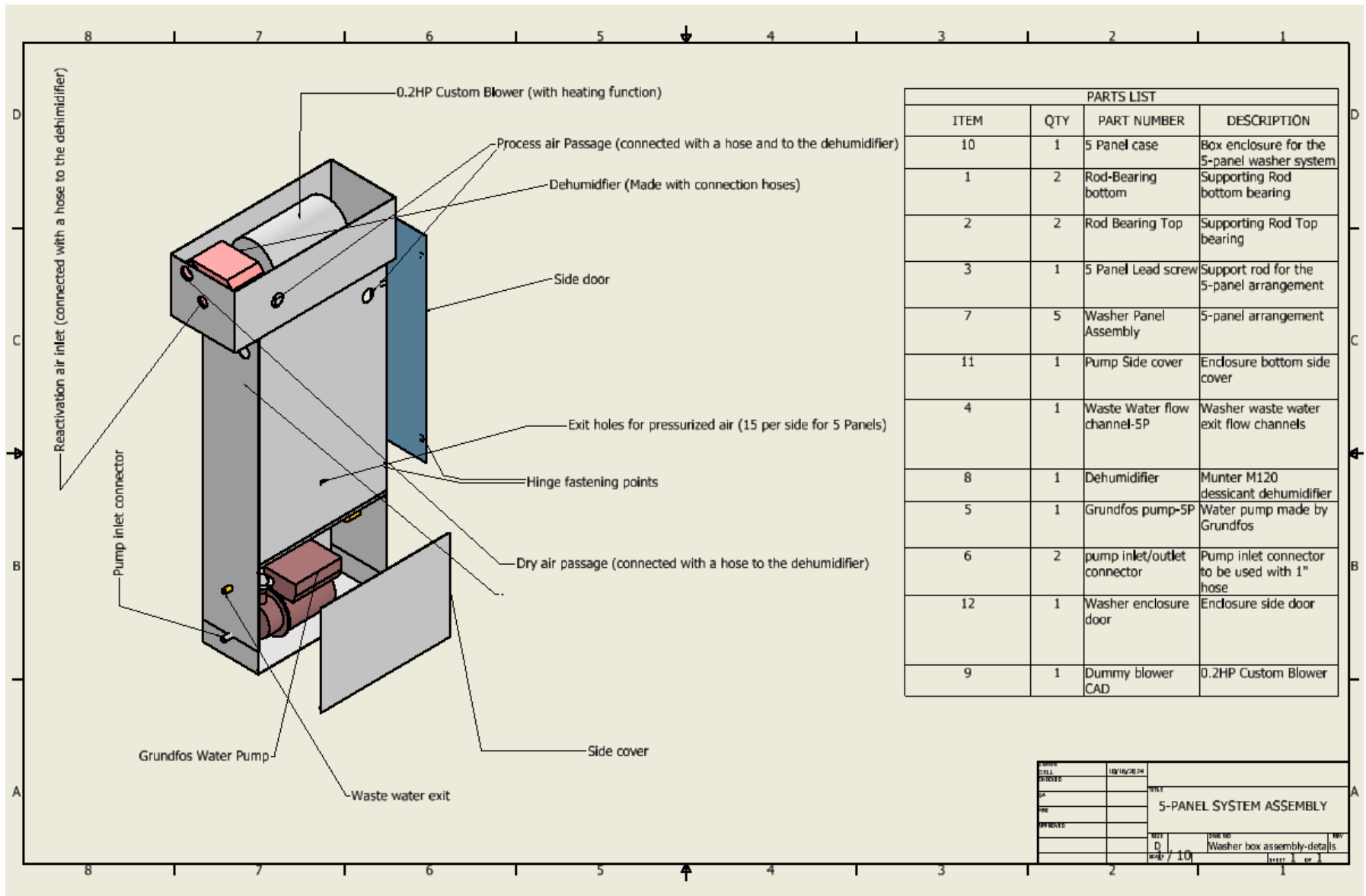


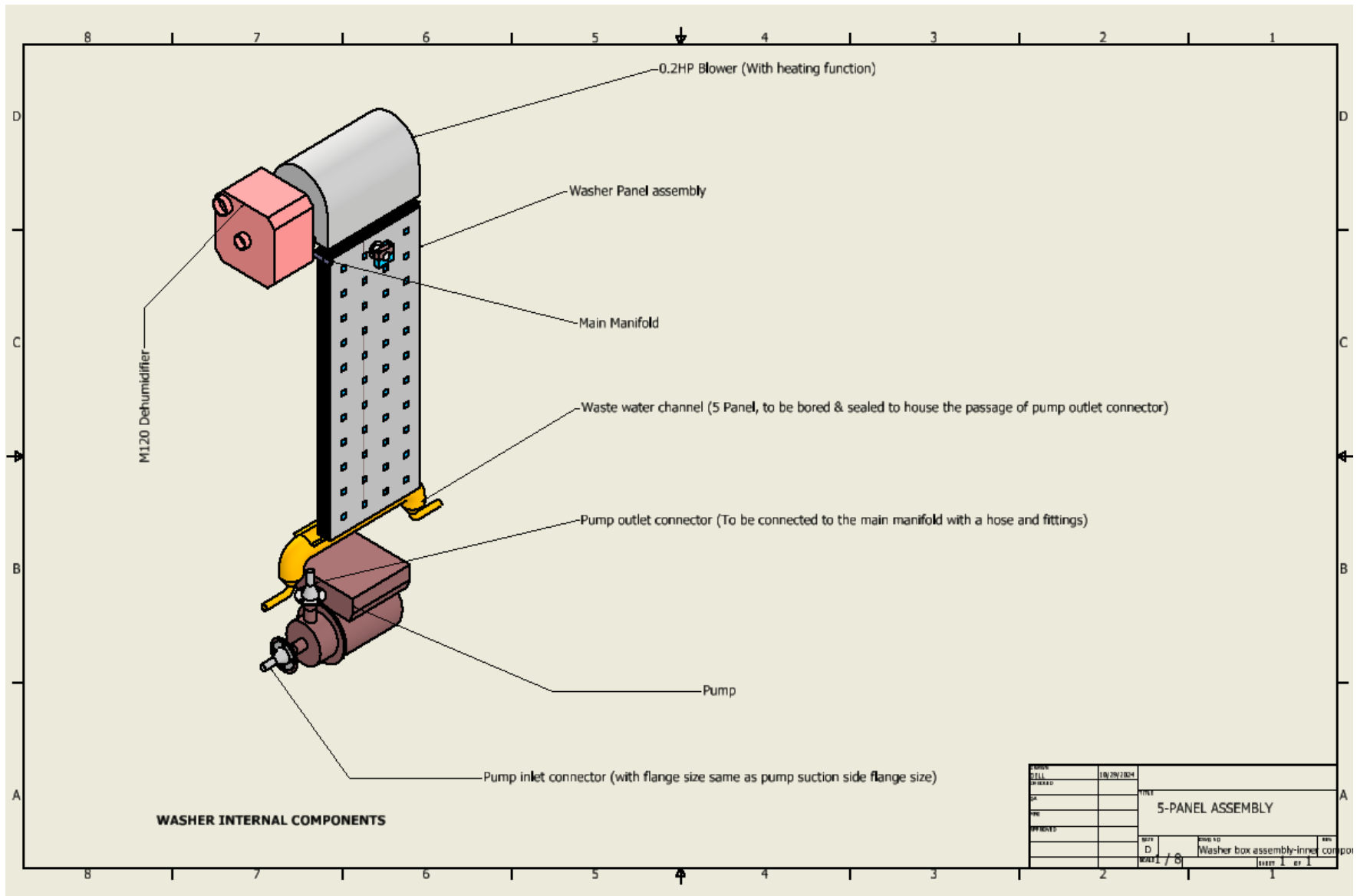
CAD DESIGNS OF THE PRESSURE WASHER AND ITS COMPONENTS

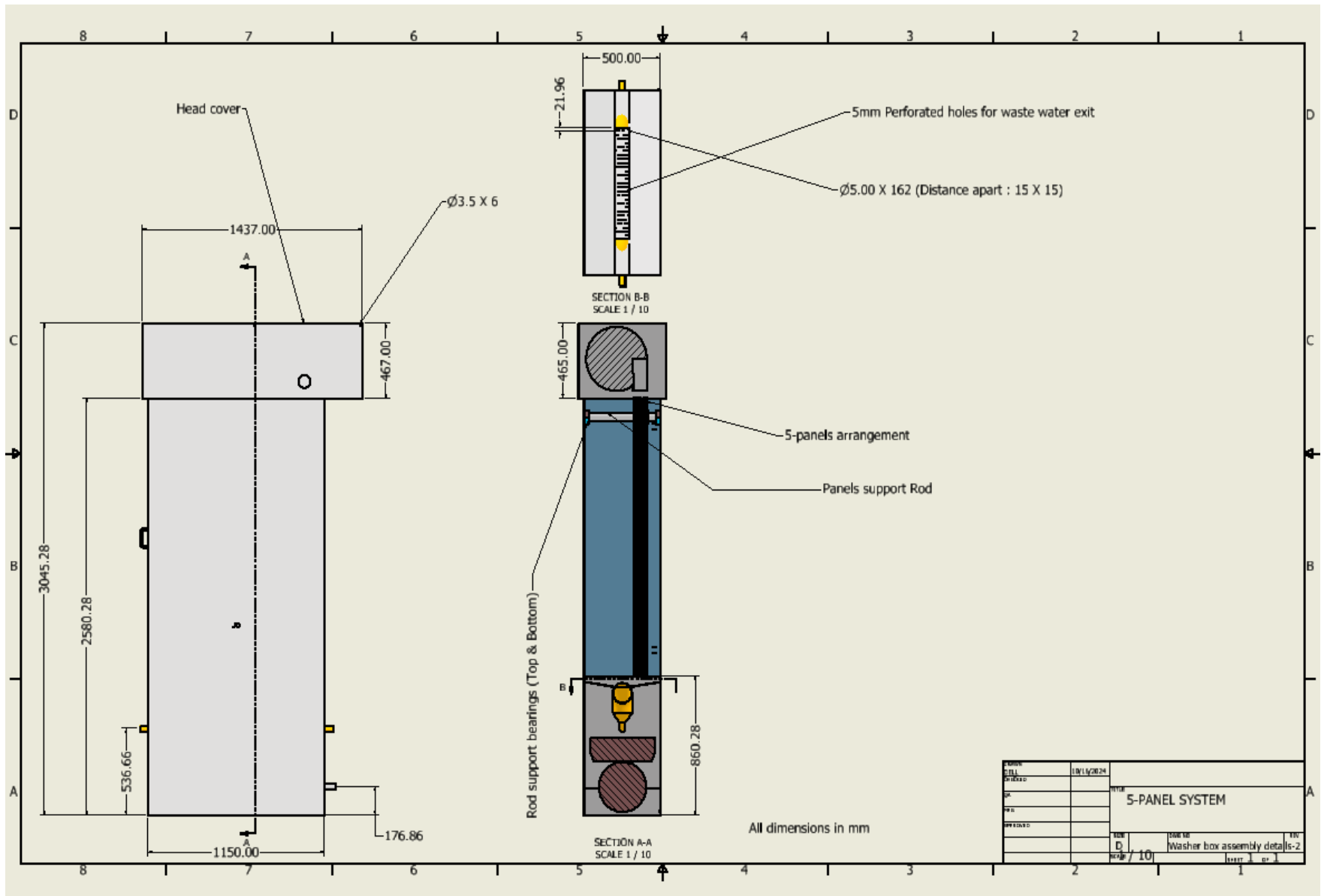
Name	
Drawn	
Owner	Shane Ang
Title	Innovative Panel Pressure washer
Approved	
Date	16th of August, 2024.
Modified	31st of October, 2024.

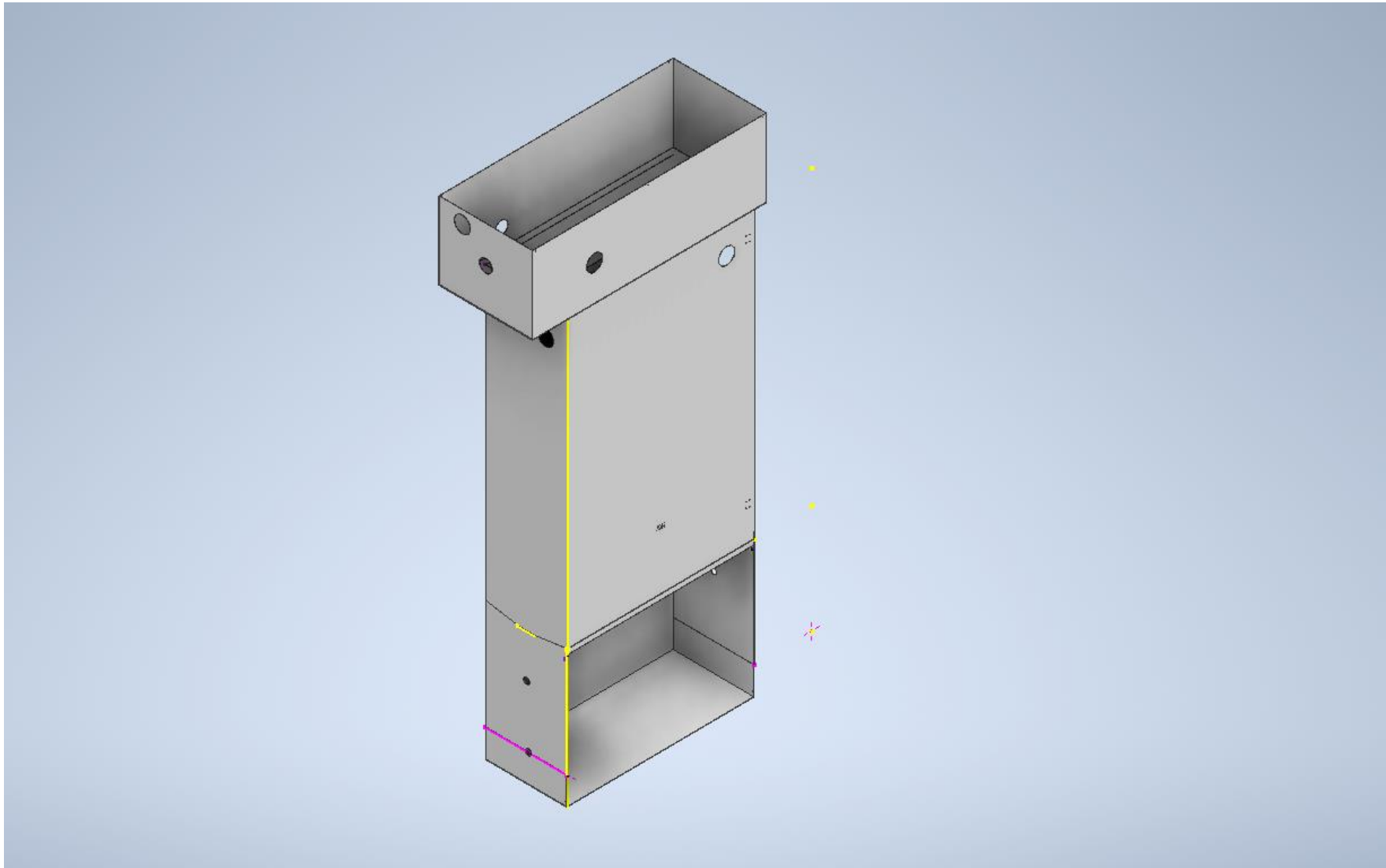
I. 5-PANEL SYSTEM

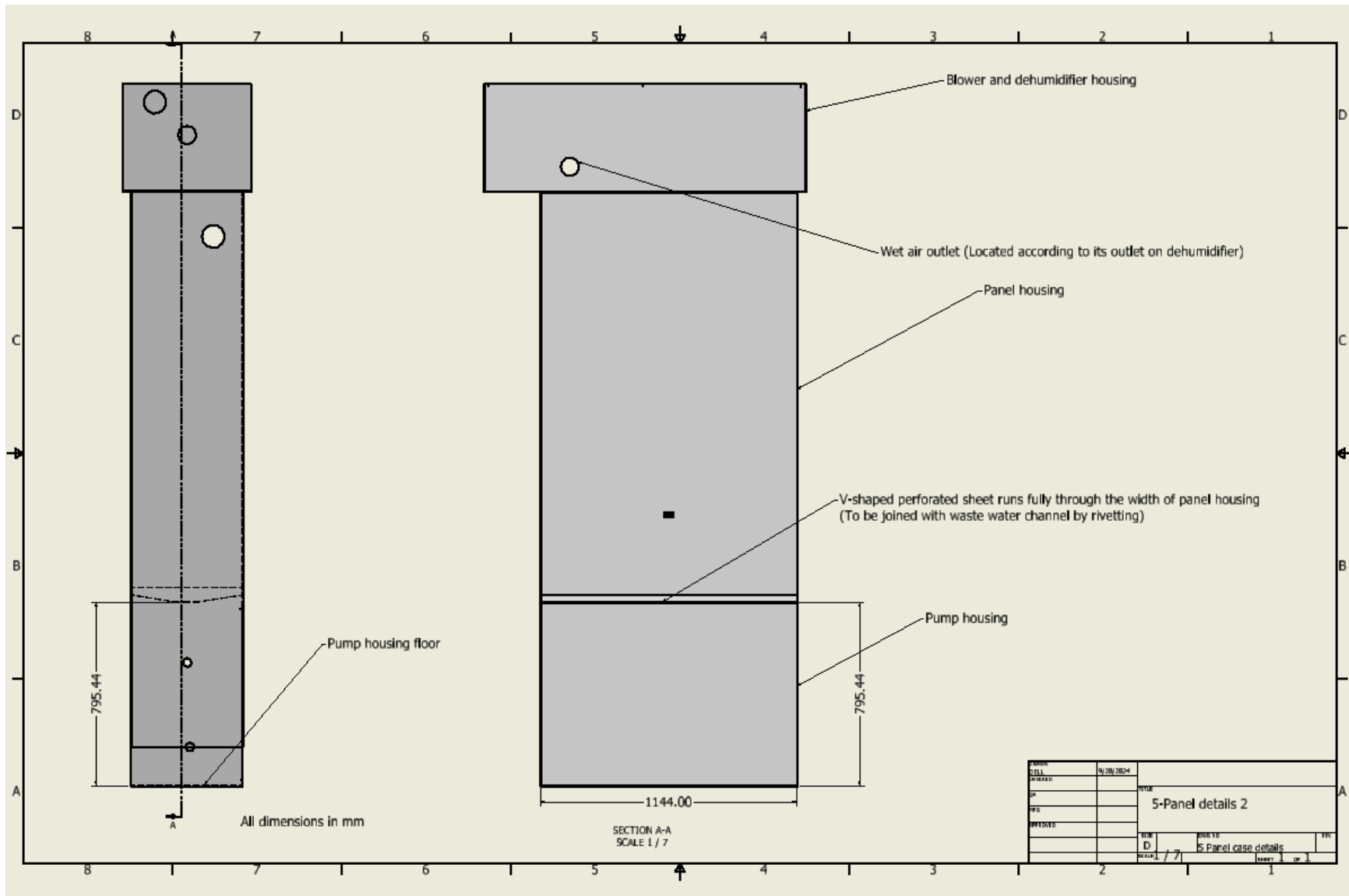


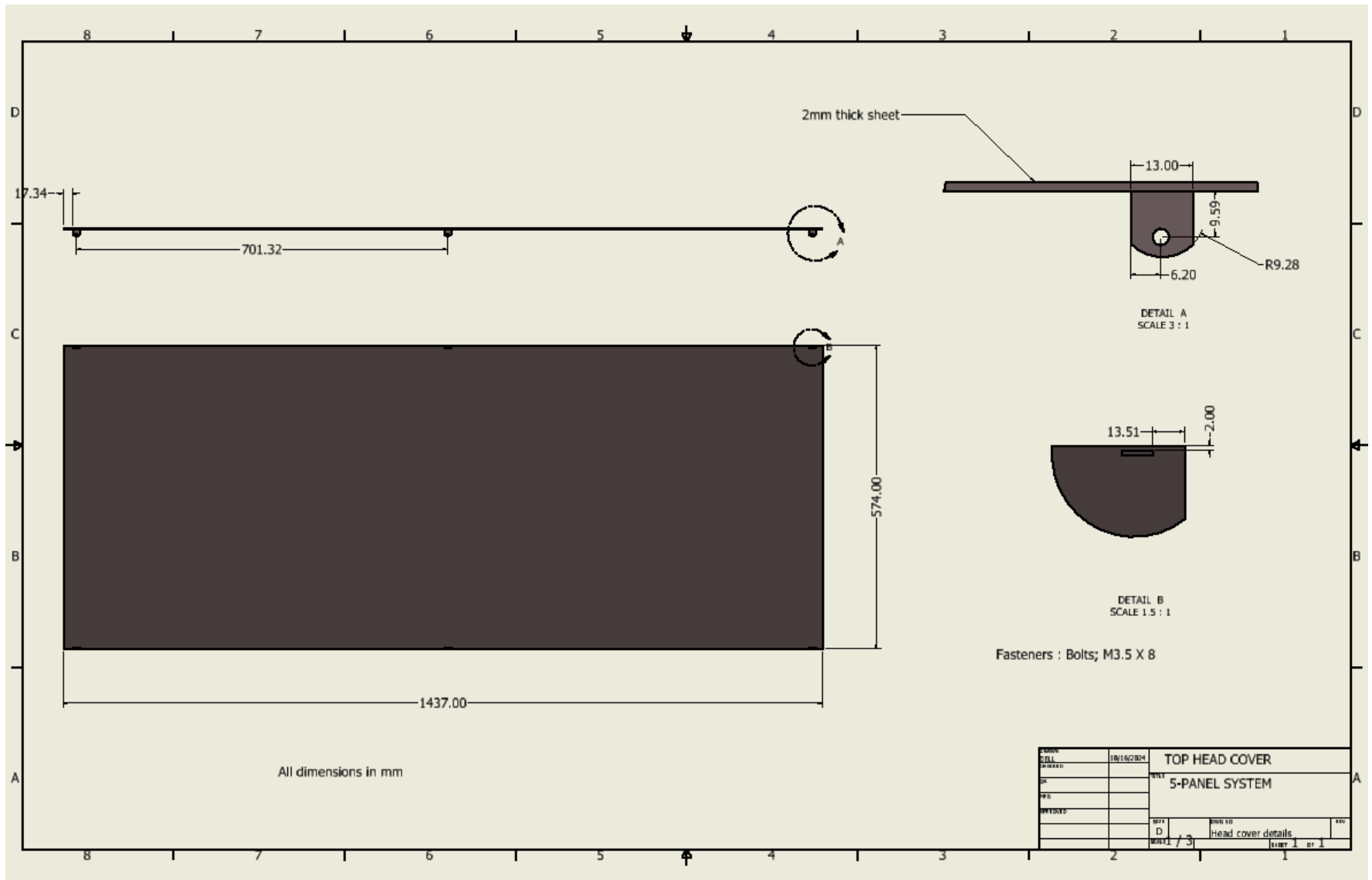


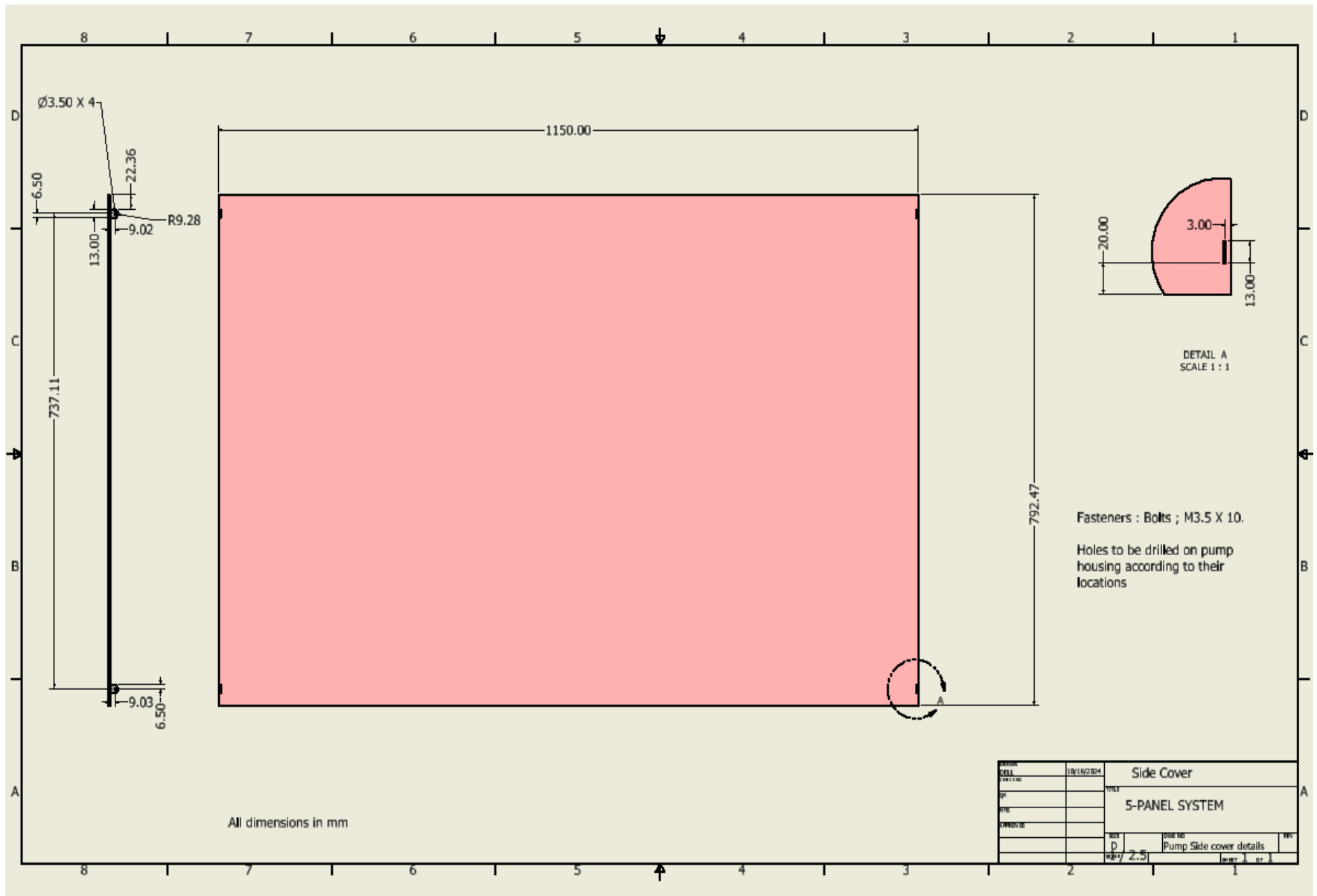


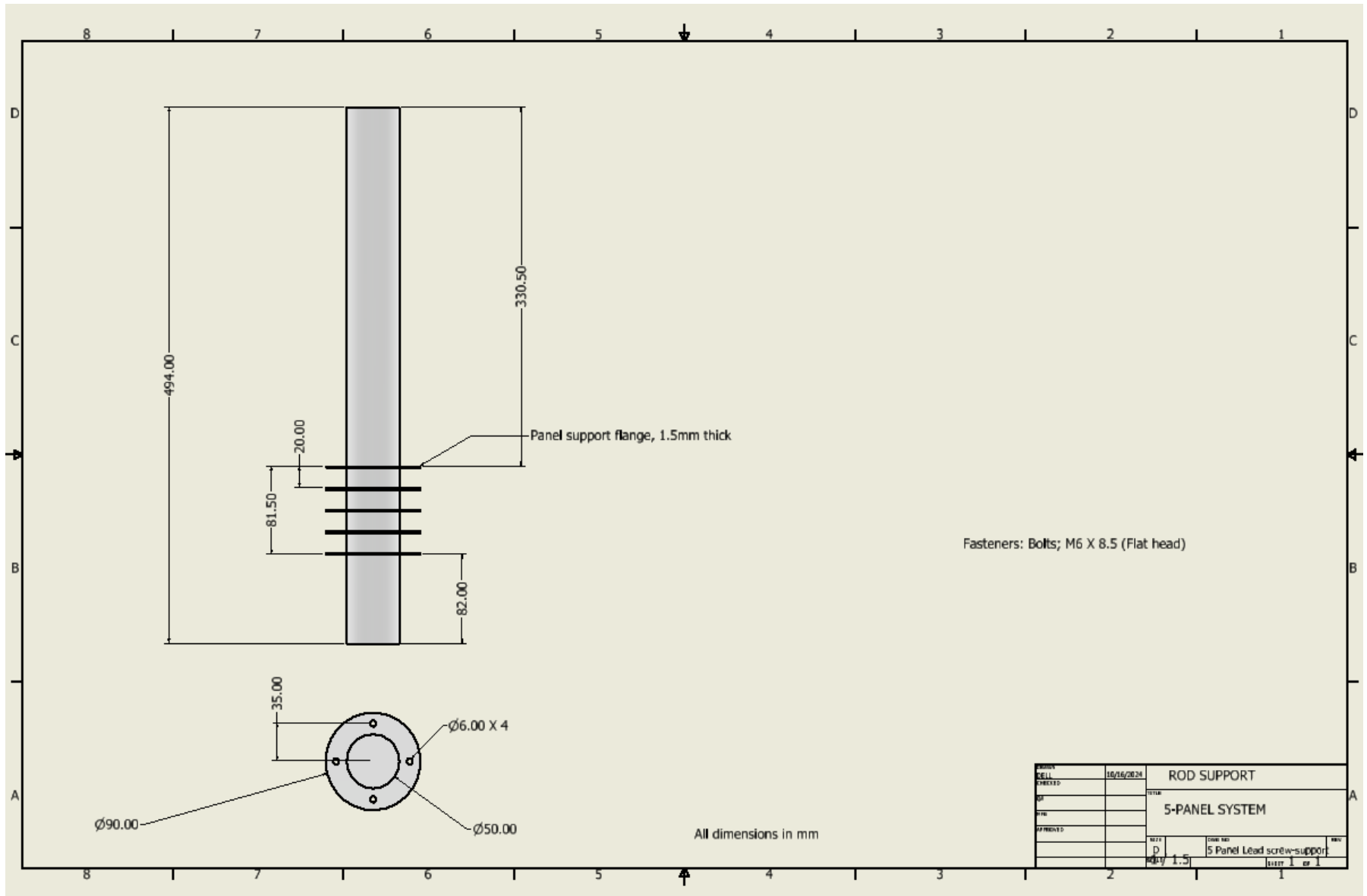


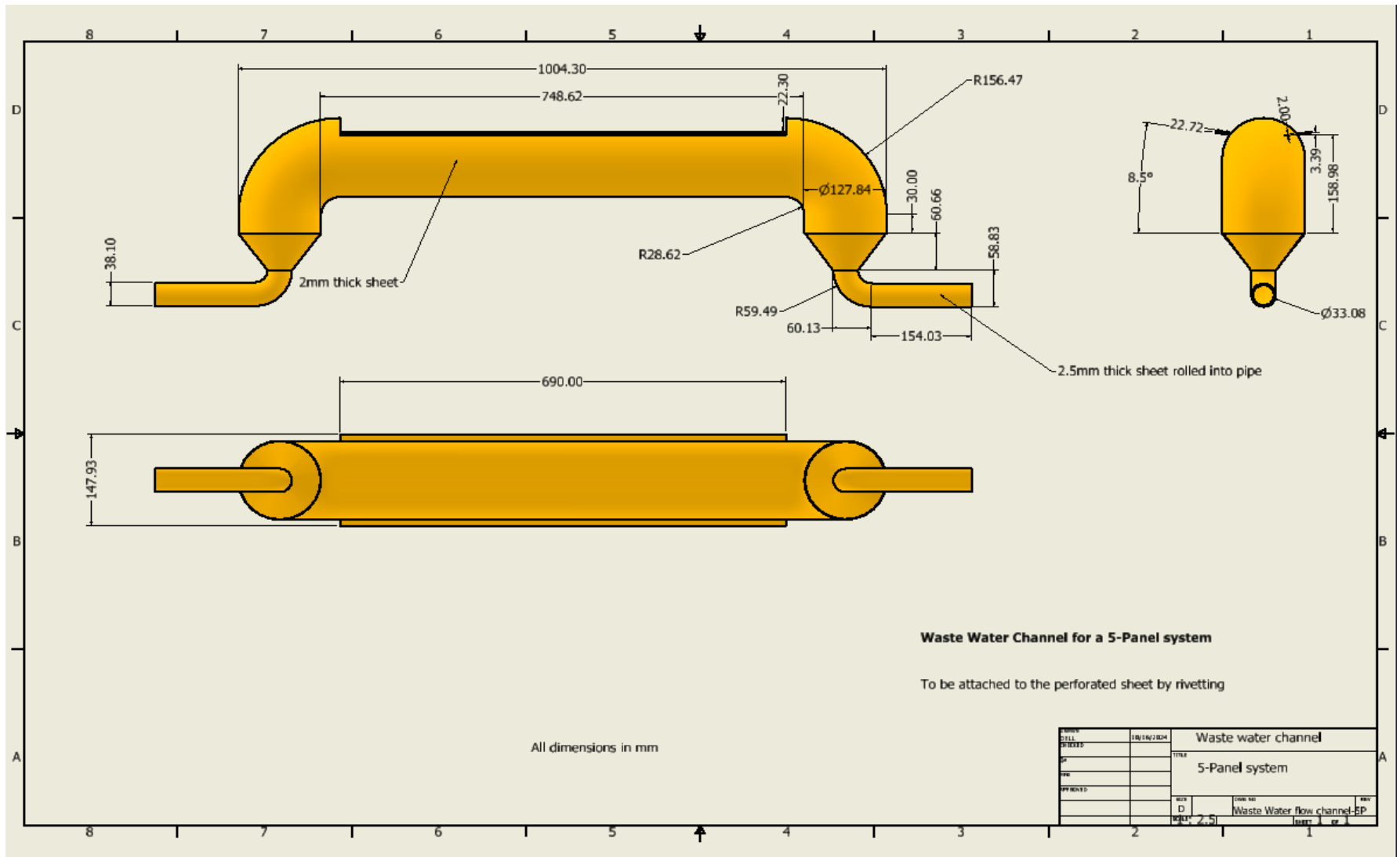


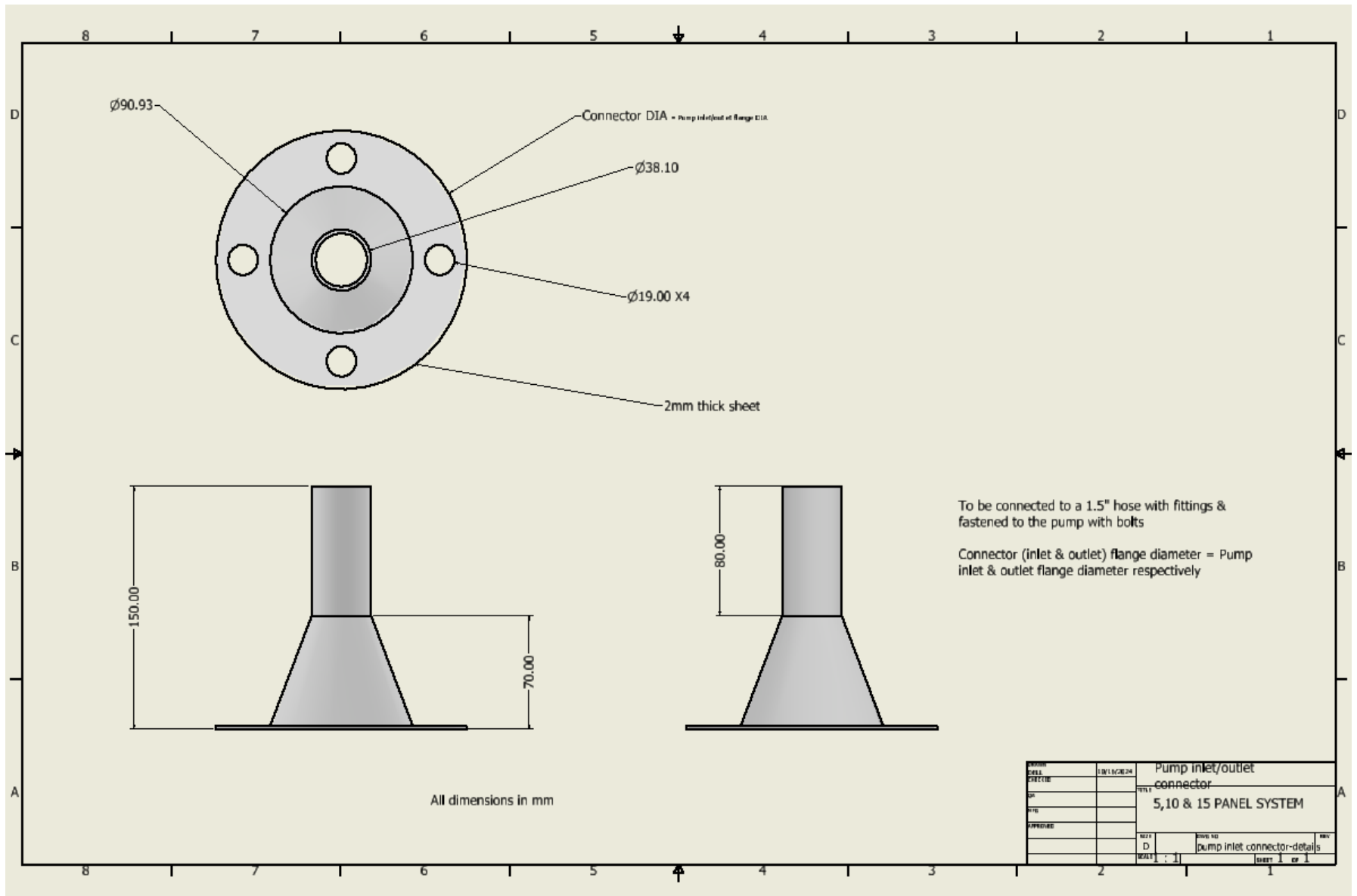


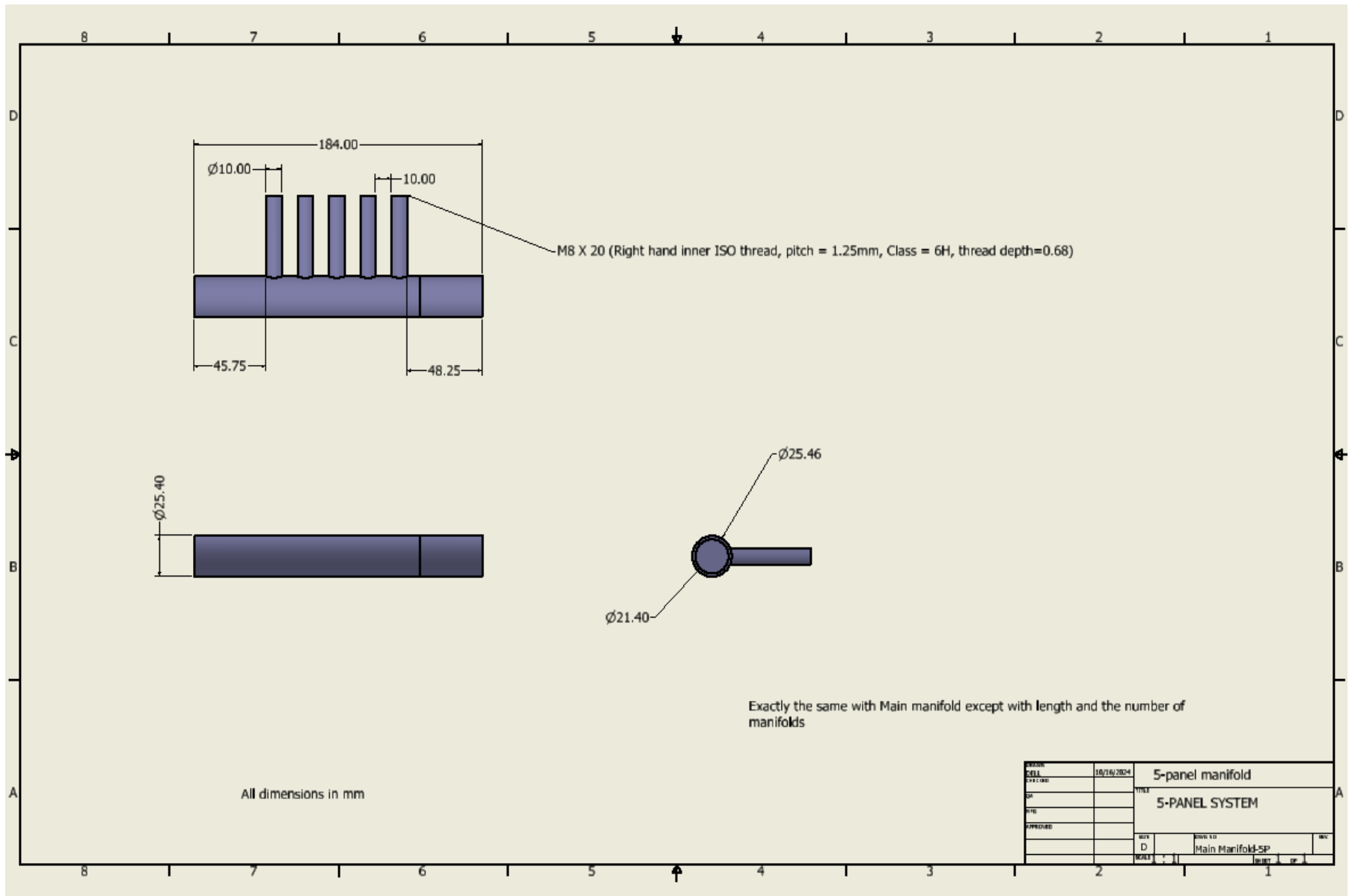














Company name:

Created by:

Phone:

Date: 13/09/2024

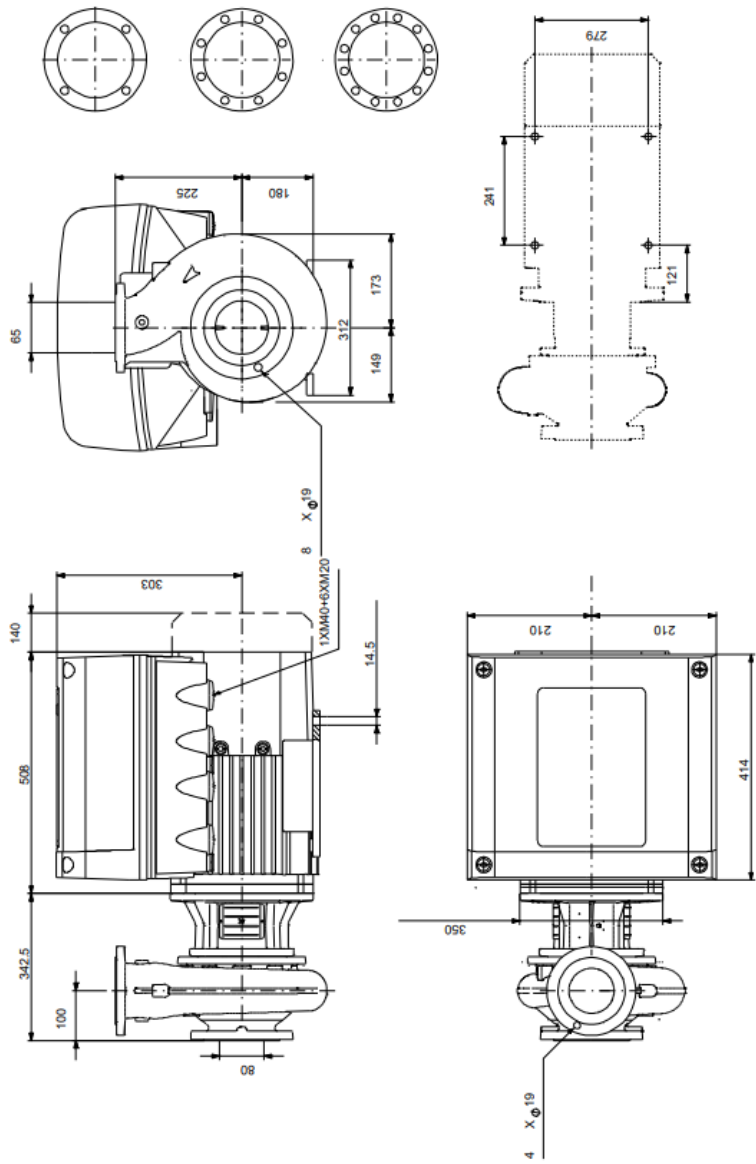
Qty.	Description
------	-------------

2	NBE 65-200/198 AAF2AESBQQEQWB
---	-------------------------------

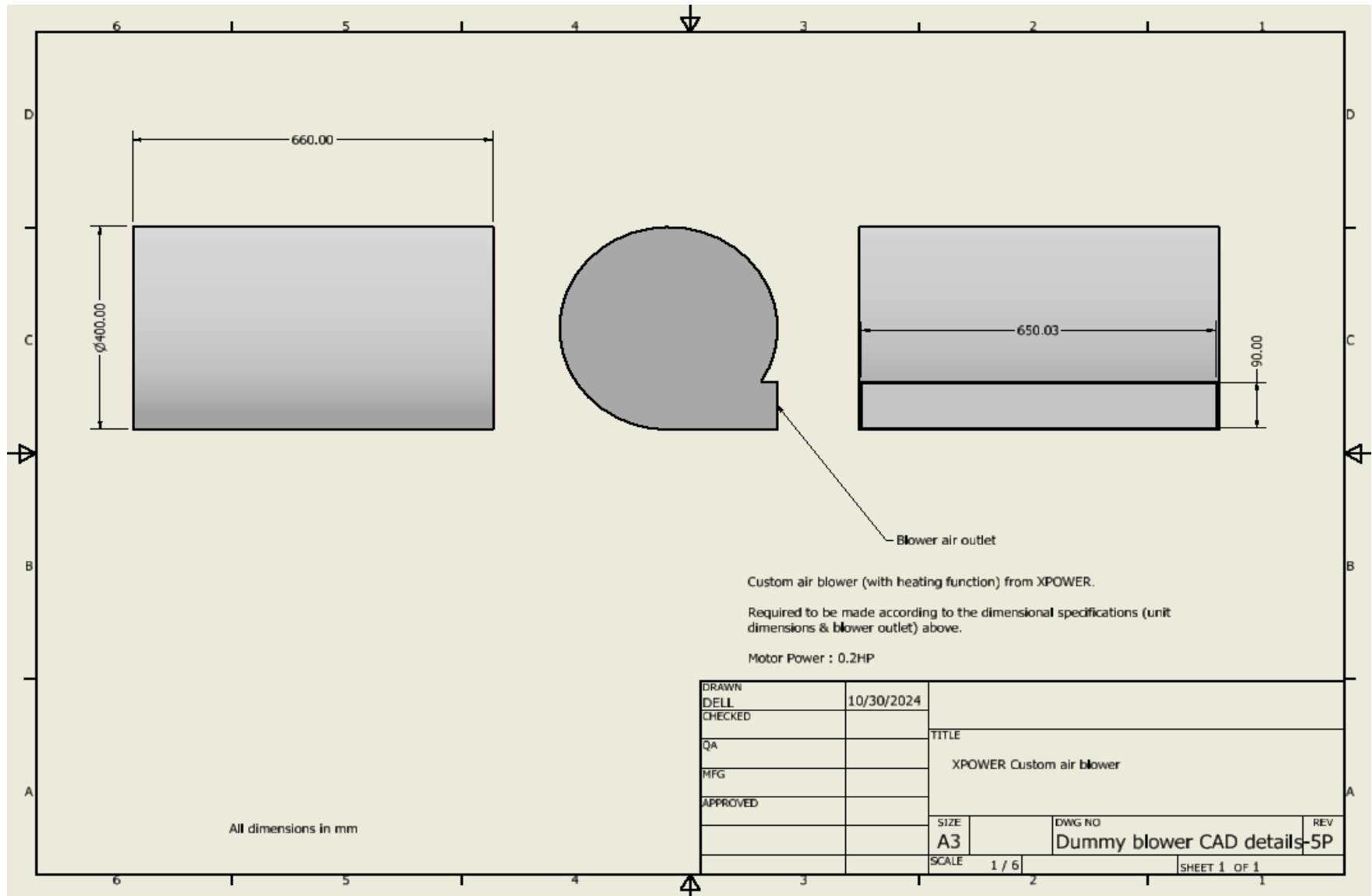


Note! Product picture may differ from actual product

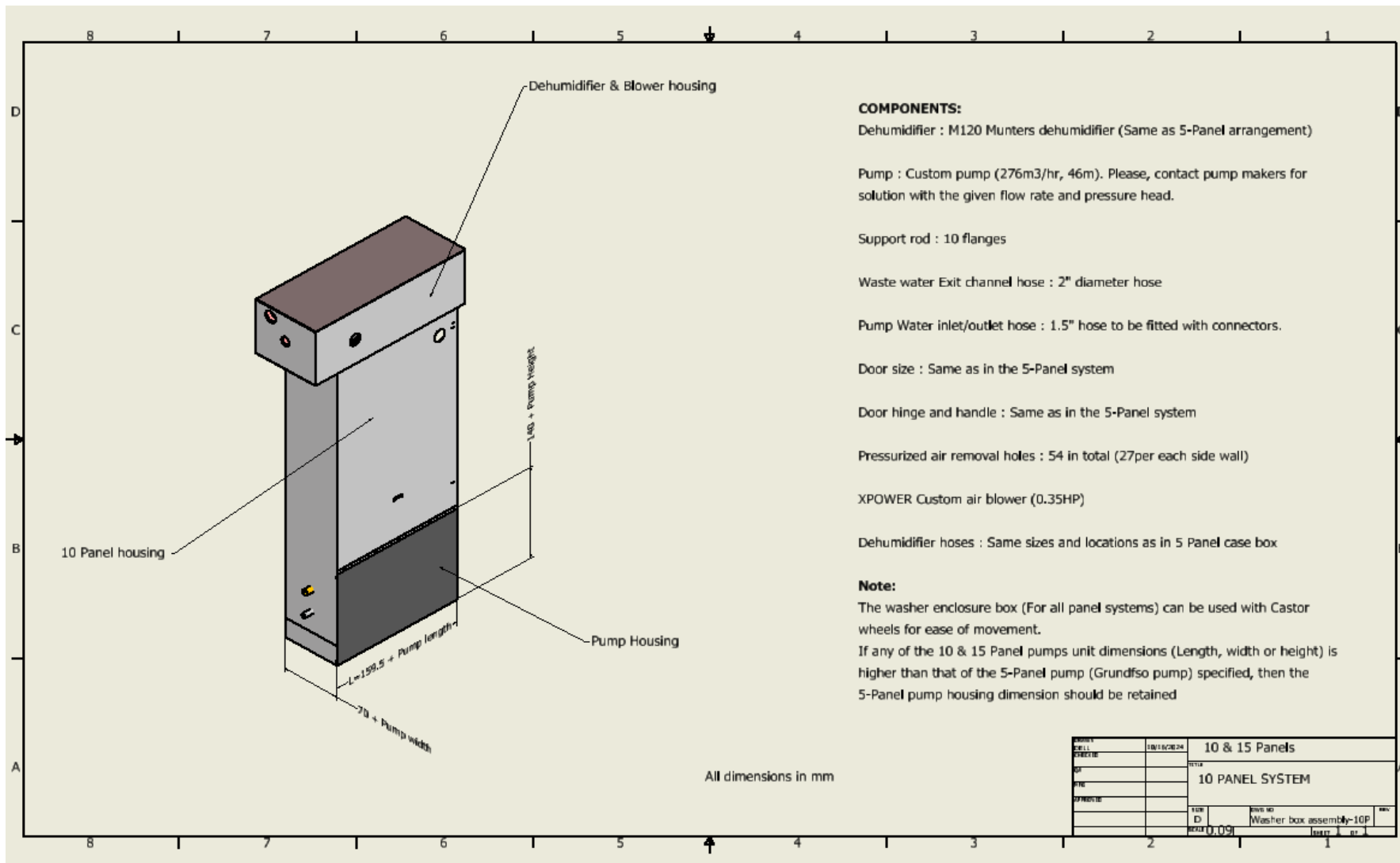
Product No.: [97907877](#)



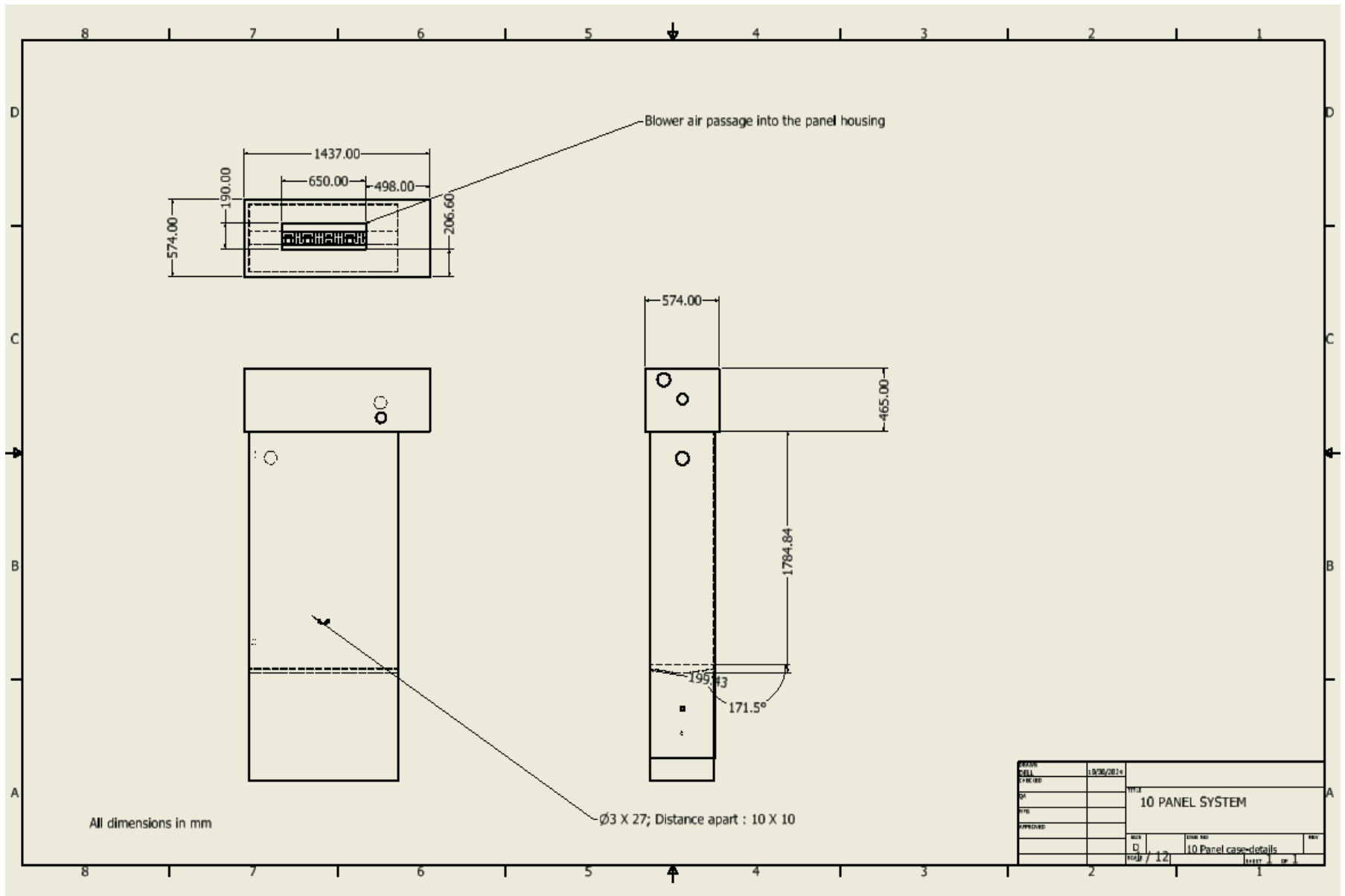
XPOWER web links: <https://xpower.com/product-category/air-movers/centrifugal-air-movers/>

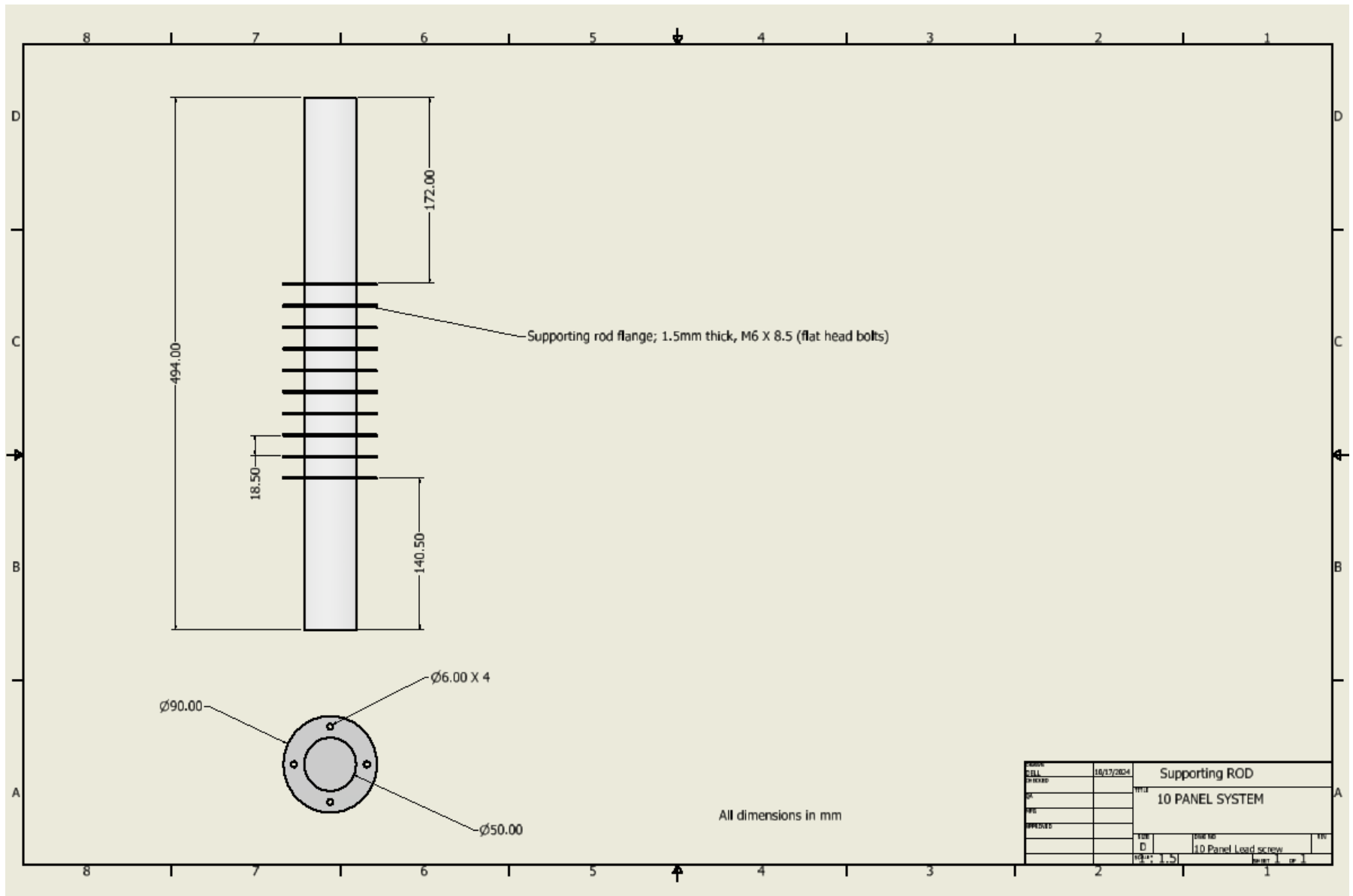


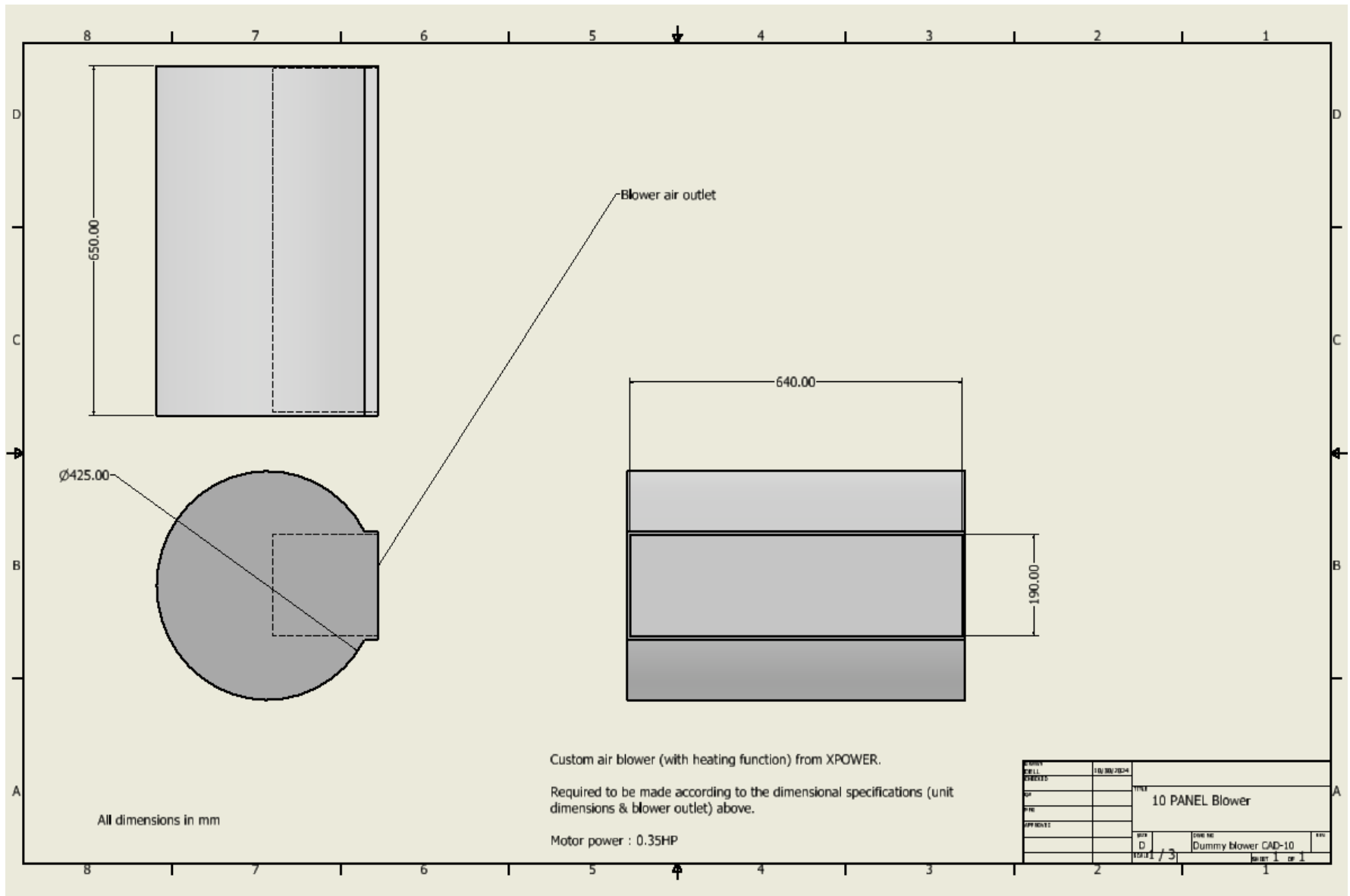
II. 10 & 15-PANEL SYSTEM

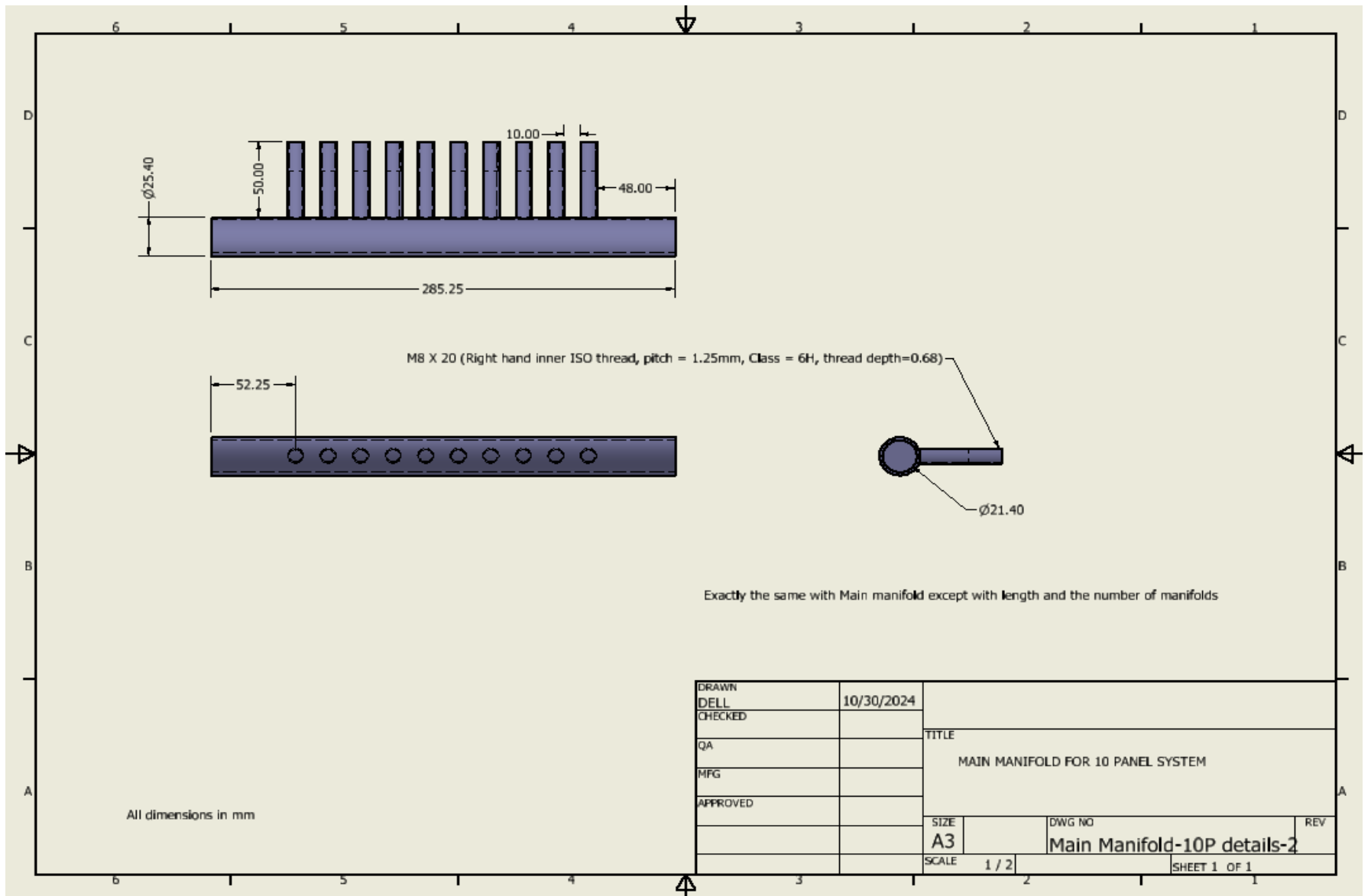


Note: The washer enclosure box (for all panel systems/arrangements) can be used with castor wheels for ease of movement.



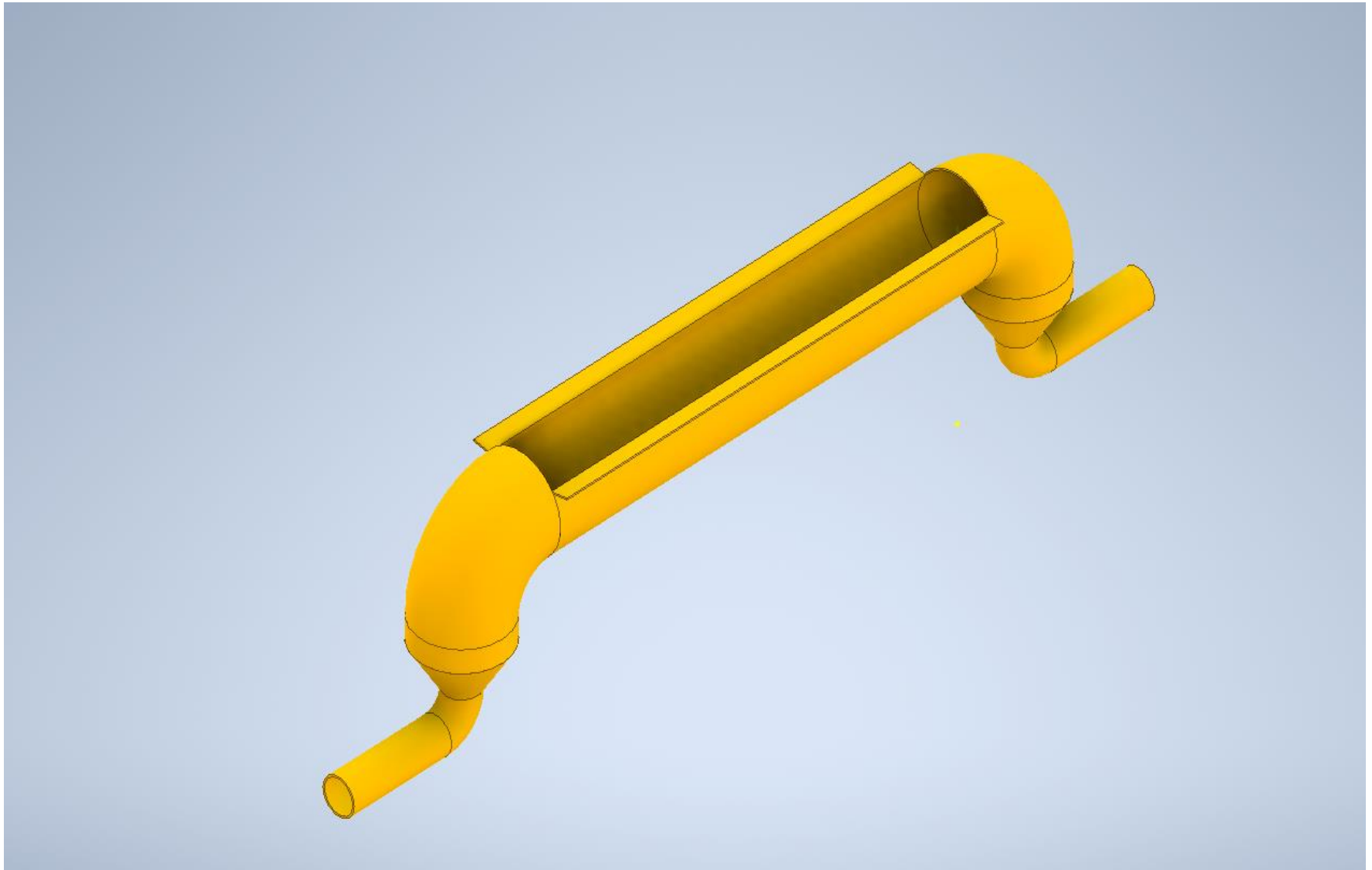


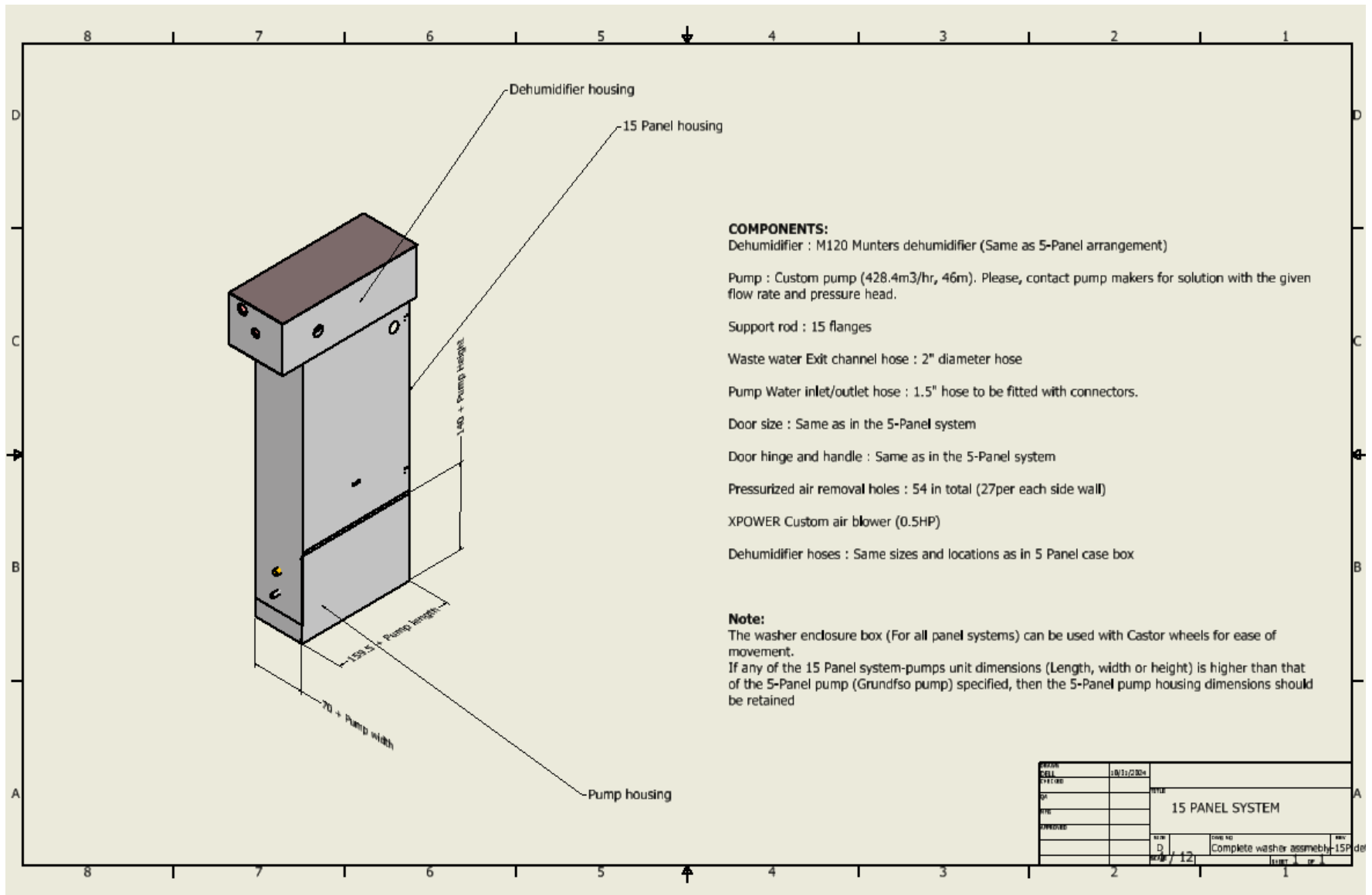


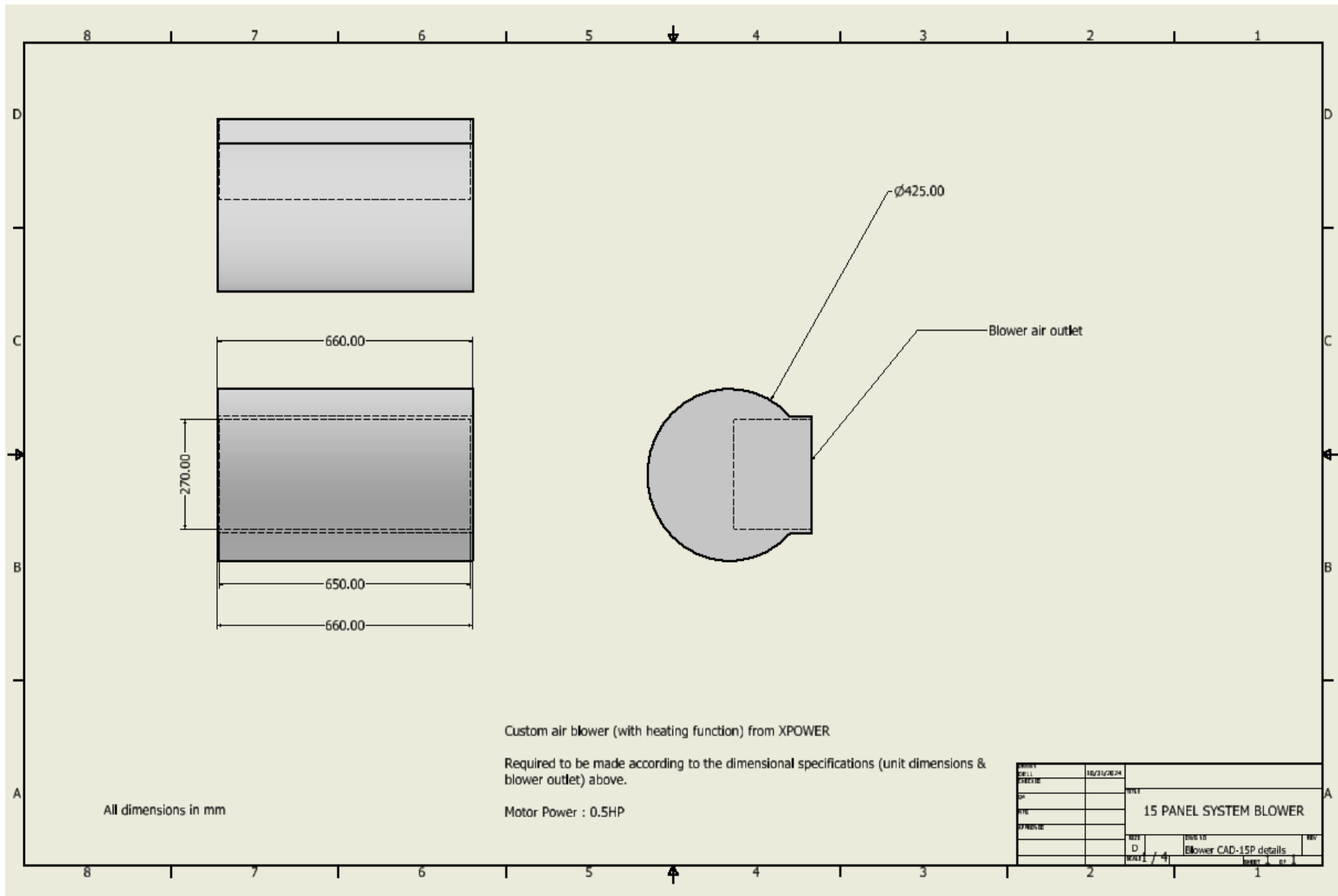


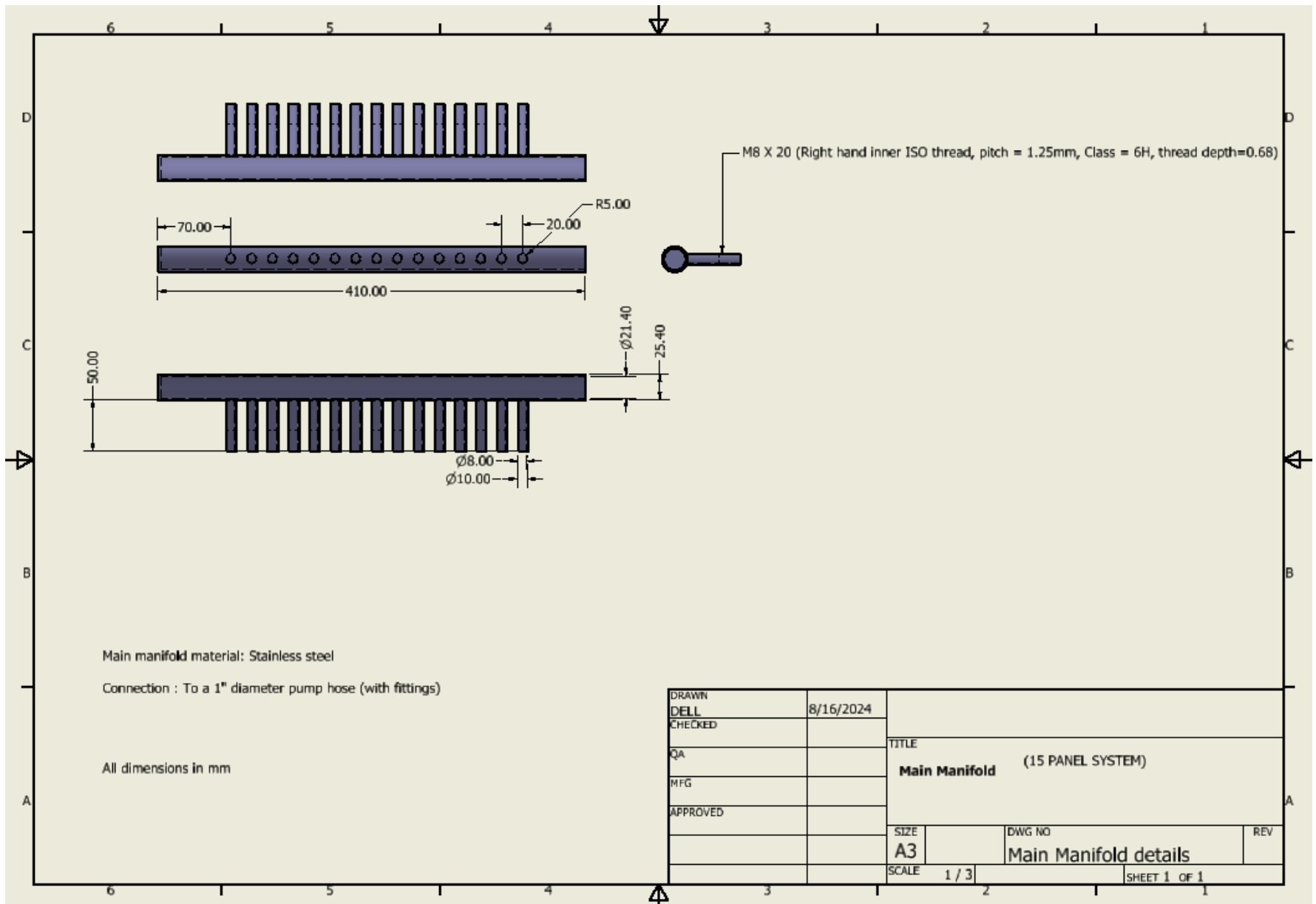
All dimensions in mm

DRAWN	DELL	10/30/2024		
CHECKED			TITLE	
QA			MAIN MANIFOLD FOR 10 PANEL SYSTEM	
MFG			SIZE	DWG NO
APPROVED			A3	Main Manifold-10P details-2
			SCALE	REV
			1 / 2	
			SHEET 1 OF 1	

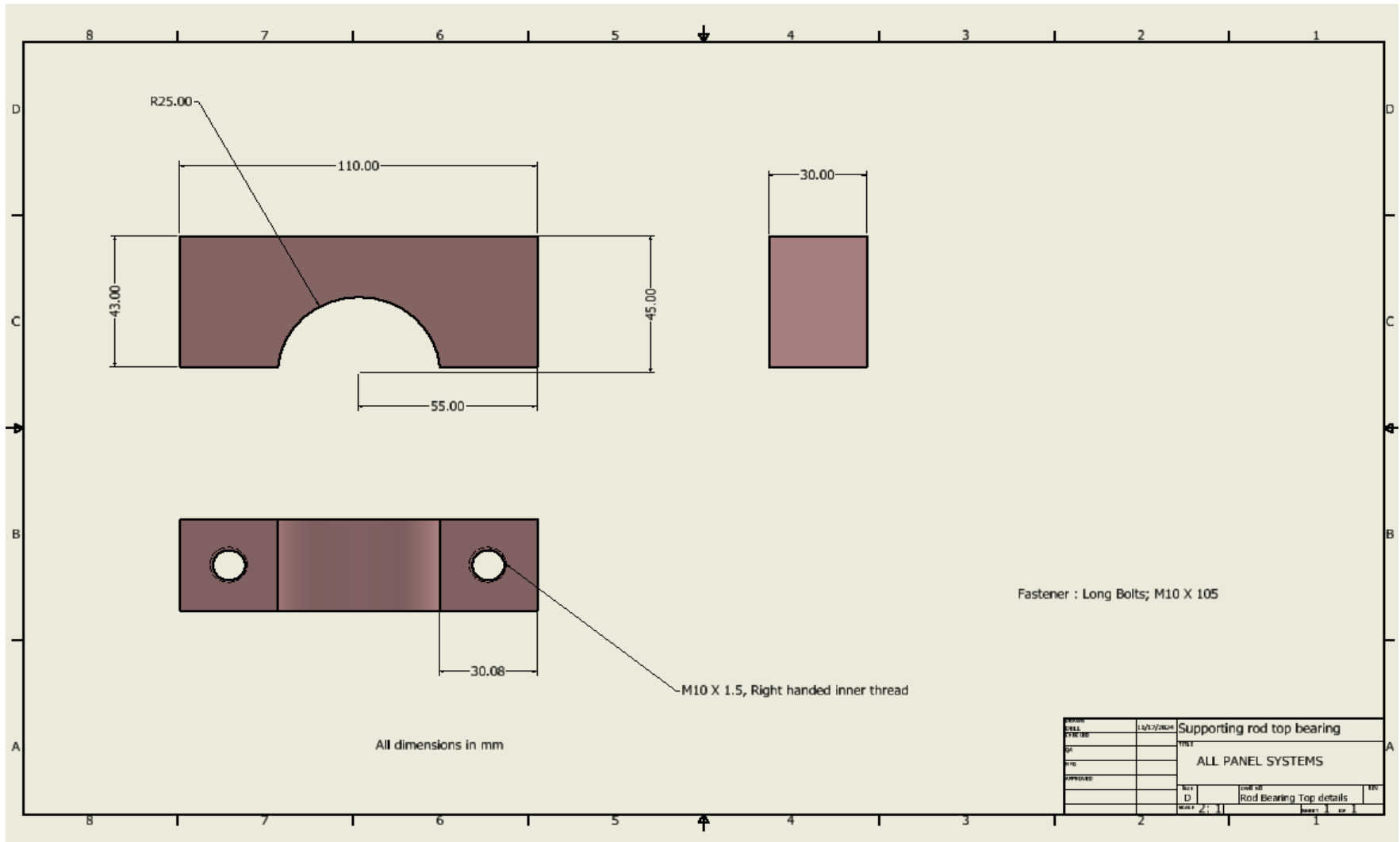


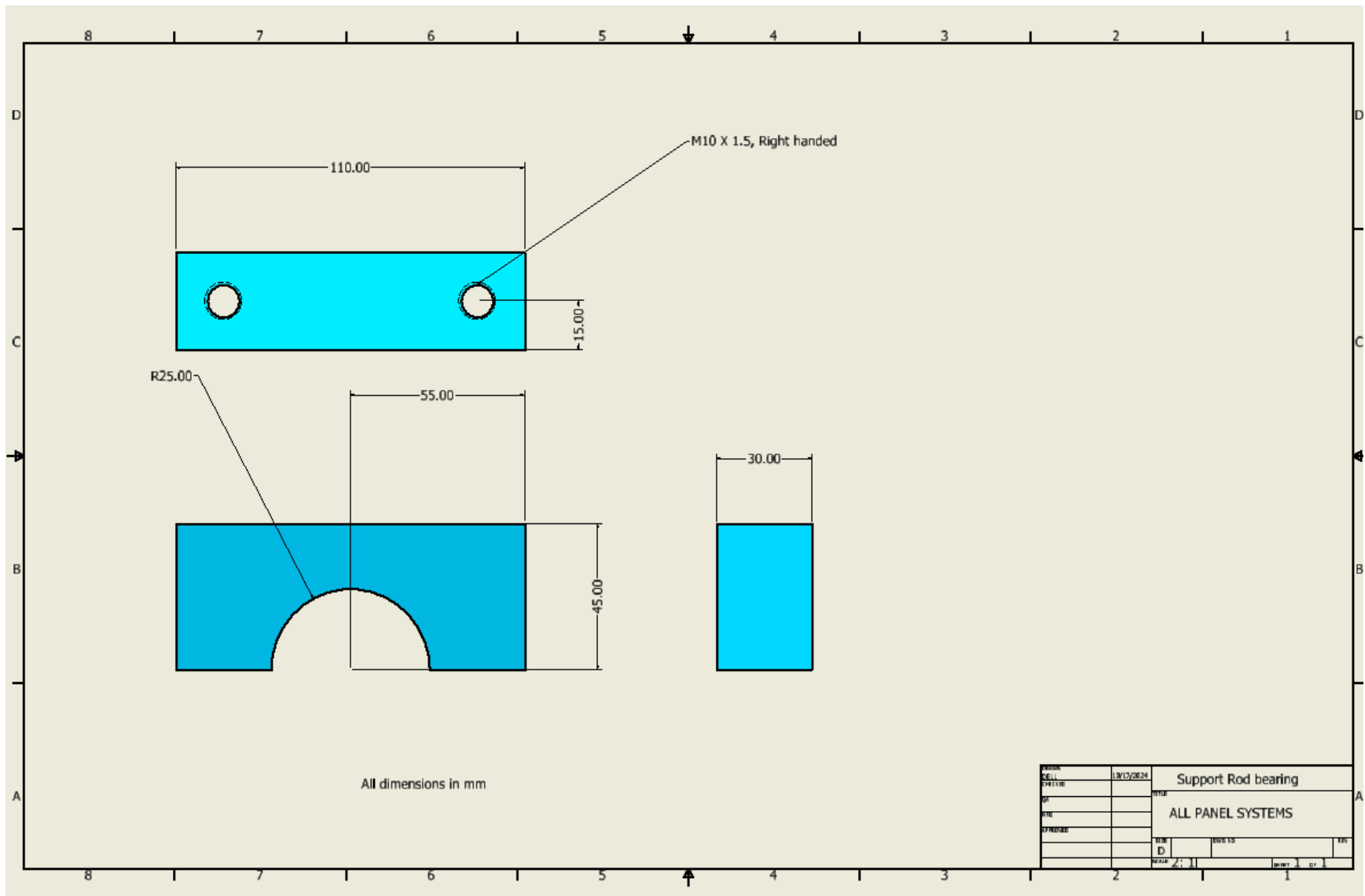






III. GENERAL COMPONENTS FOR ALL-PANEL SYSTEMS





Handle products suggestions: <https://pdf.essentracomponents.uk/essentra-catalogue-uk/page/554-555>

PULL HANDLES

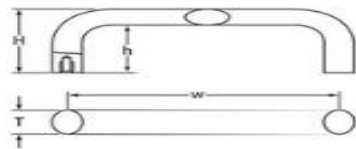
Aluminium Handles

SR 5102

Aluminium



Type 1

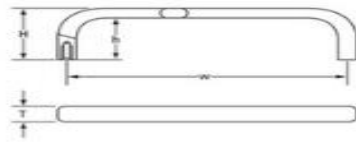


Type 1

Part Number	Colour	Dimensions (mm)				Thread Size	Standard Pack Quantity
		H	h	T	w		
463283	Black	50	37	20	100	M6 x 12	10
463284	Black	50	37	20	112	M6 x 12	10
463286	Black	50	37	20	120	M6 x 12	10
463287	Black	55	38	26	120	M8 x 14	10
463288	Black	50	37	20	128	M6 x 12	10
463289	Black	55	38	26	128	M8 x 14	10
463290	Black	50	37	20	160	M6 x 12	10
463291	Black	55	38	26	160	M8 x 14	10
463292	Black	55	38	26	180	M8 x 14	10
463293	Black	55	38	26	192	M8 x 14	10
463294	Black	55	38	26	350	M8 x 14	10



Type 2

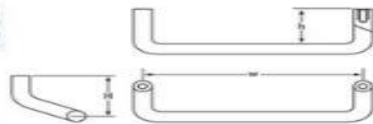


Type 2

Part Number	Colour	Dimensions (mm)				Thread Size	Standard Pack Quantity
		H	h	T	w		
491379	Silver	41	33	12	55	M5	10
491380	Silver	41	33	12	88	M5	10
491381	Silver	41	33	12	100	M5	10
491382	Silver	41	33	12	120	M5	10
491383	Silver	41	33	12	180	M5	5
491384	Silver	41	33	12	235	M5	5
463295	Black	40	32	12	55	M5 x 10	10
463296	Black	40	32	12	88	M5 x 10	10
463297	Black	40	32	12	100	M5 x 10	10
463298	Black	40	32	12	120	M5 x 10	10
463300	Black	40	32	12	200	M5 x 10	10
463302	Black	40	32	12	250	M5 x 10	10



Type 3



Type 3

Part Number	Colour	Dimensions (mm)				Thread Size	Standard Pack Quantity
		H	h	T	w		
463305	Black	40	30	-	86	M5 x 10	10
463306	Black	40	30	-	120	M5 x 10	10
463307	Black	40	30	-	180	M5 x 10	10



Type 4



Type 4

Part Number	Colour	Dimensions (mm)				Thread Size	Standard Pack Quantity
		H	h	T	w		
491385	Silver	32	25	10.5	100	M6	10
491386	Silver	50	40	14.5	125	M6	10



Hinge products suggestions: <https://pdf.essentracomponents.uk/essentra-catalogue-uk/page/626-627>

Torque Hinges (Dual Axis)

SR 6493

Stainless Steel

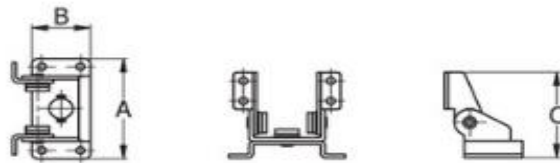
- Free stop at any angle in tilt and swivel
- Provide torque stability in both directions
- Suitable for monitor screen
- For detailed drawings please refer to our website



Type 1



Type 2



Type 1:

Torque: 2.9Nm tilting

Torque: 1.4Nm swiveling

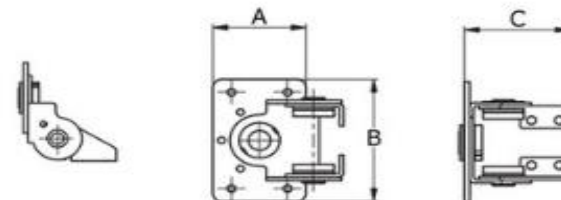
Part Number	Dimensions (mm)			Standard Pack Quantity
	A	B	C	
550070	60	30	51.4	20

Type 2:

Torque: 7Nm tilting

Torque: 3Nm swiveling

Part Number	Dimensions (mm)			Standard Pack Quantity
	A	B	C	
550069	50	76	54	20



email | sales@essentracomponents.co.uk web | www.essentracomponents.co.uk

505

INDUSTRIAL CASTORS - POLYAMIDE WHEELS

Castor - White Polyamide Wheel

Zinc Plated Steel Housing

- A full range of light to heavy duty castors suitable for use in a variety of applications
- Light duty - suitable for display units, restaurant equipment, trolleys, office and medical equipment
- Medium duty - suitable for trolleys, roll cages and material handling applications
- Heavy duty - suitable for trolleys, lifting equipment and automatic gates
- Good resistance to abrasion, petroleum and chemical agents
- Double ball race on types 1 to 6
- Total stop brake locks wheel and swivel on braked versions

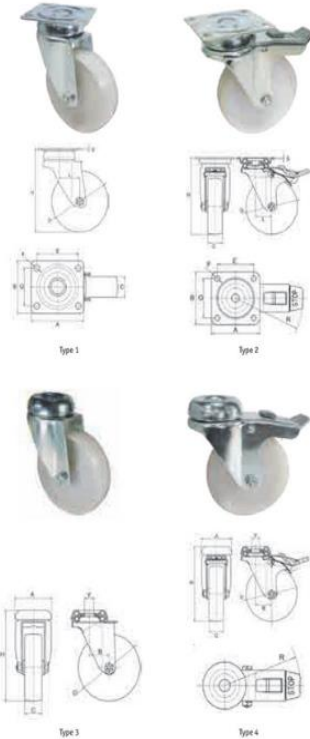
Swivel Plate SR5630/SR5659/SR5623/SR5604/SR5660/SR5624

Part Number	Type	Dimensions (mm)						Approx. Load Capacity (kg)	Standard Pack Quantity	
		D	C	A x B	Ex G	F	H			
491012	1	50	18	60 x 60	45 x 45	6.5	70	55	36	
491013	1	60	22	60 x 60	45 x 45	6.5	90	60	36	
491014	1	75	23	60 x 60	45 x 45	6.5	106	60	28	
491015	1	80	22	60 x 60	45 x 45	6.5	109	60	28	
491016	1	100	27	78 x 70	60 x 50	8.3	134	80	16	
491017	1	125	27	78 x 70	60 x 50	8.3	159	80	12	
494761	1	80	30	95 x 80	80 x 60	9.0	108	100	20	
494762	1	100	30	95 x 80	80 x 60	9.0	127	100	16	
494763	1	125	39	95 x 80	80 x 60	9.0	155	150	10	
498818	1	150	40	98.7 x 80	80 x 60	9.0	184	180	6	
491121	1	150	42	132 x 110	105 x 80	12.0	188	330	4	
491122	1	200	50	132 x 110	105 x 80	12.0	243	600	2	
491018	2	50	18	60 x 60	45 x 45	6.5	70	80	55	48
491019	2	60	22	60 x 60	45 x 45	6.5	90	84	60	36
491020	2	75	23	60 x 60	45 x 45	6.5	106	84	60	28
491021	2	80	22	60 x 60	45 x 45	6.5	109	84	60	28
491022	2	100	27	78 x 70	60 x 50	8.3	134	106	80	16
491023	2	125	27	78 x 70	60 x 50	8.3	159	106	80	12
494765	2	80	30	95 x 80	80 x 60	9.0	108	110	100	16
494766	2	100	30	95 x 80	80 x 60	9.0	127	110	120	14
494767	2	125	39	95 x 80	80 x 60	9.0	155	113	150	8
498819	2	150	40	98.7 x 80	80 x 60	9.0	184	115	180	6
491123	2	150	42	132 x 110	105 x 80	12.0	188	128	330	4
491124	2	200	50	132 x 110	105 x 80	12.0	243	158	600	2

Bolt Hole SR5600/SR5662

Part Number	Type	Dimensions (mm)						Approx. Load Capacity (kg)	Standard Pack Quantity
		D	C	A	F	H	R		
490995	3	50	18	48	12	70	55	48	
490996	3	60	22	48	12	90	60	40	
490997	3	75	23	48	12	106	60	36	
490998	3	80	22	48	12	109	60	36	
490999	3	100	27	57	12	134	80	16	
491000	3	125	27	57	12	159	80	12	
494773	3	80	30	64	12	108	100	20	
494774	3	100	30	64	12	127	100	16	
494775	3	125	39	64	12	155	120	12	
491001	4	50	18	48	12	70	80	55	48
491002	4	60	22	48	12	90	84	60	40
491003	4	75	23	48	12	106	84	60	36
491004	4	80	23	48	12	109	84	60	36
491005	4	100	27	57	12	134	106	80	16
491006	4	125	27	57	12	159	106	80	12
494776	4	80	30	64	12	108	110	100	16
494777	4	100	30	64	12	127	110	120	14
494778	4	125	39	64	12	155	113	120	12

CONTINUED ON NEXT PAGE



INDUSTRIAL CASTORS - POLYAMIDE WHEELS

Castor - White Polyamide Wheel CONTINUED



Threaded Stem SR5777/SR5778/SR5783/SR5784

Part Number	Type	Thread Size	Dimensions (mm)			Approx. Load Capacity (kg)	Standard Pack Quantity
			D	C	H		
497835	5	M10 x 25	50	24	70	55	52
497836	5	M10 x 25	60	28	90	60	36
497837	5	M10 x 25	75	28	106	60	32
497838	5	M10 x 25	80	28	109	60	32
497839	5	M12 x 30	100	33	132	80	16
497940	5	M12 x 30	125	33	157	80	12
497942	5	M12 x 28	80	40	108	100	20
497943	5	M12 x 28	100	40	127	120	16
497949	5	M12 x 28	125	44	155	120	12
497941	6	M10 x 25	50	24	70	55	52
497942	6	M10 x 25	60	28	90	60	36
497943	6	M10 x 25	75	28	106	60	32
497944	6	M10 x 25	80	28	109	60	32
497945	6	M12 x 30	100	33	132	80	16
497946	6	M12 x 30	125	33	157	80	12
497970	6	M12 x 28	80	40	108	100	16
497971	6	M12 x 28	100	40	127	120	14
497972	6	M12 x 28	125	44	155	120	12

Fixed Plate SR5602/SR5661/SR5774

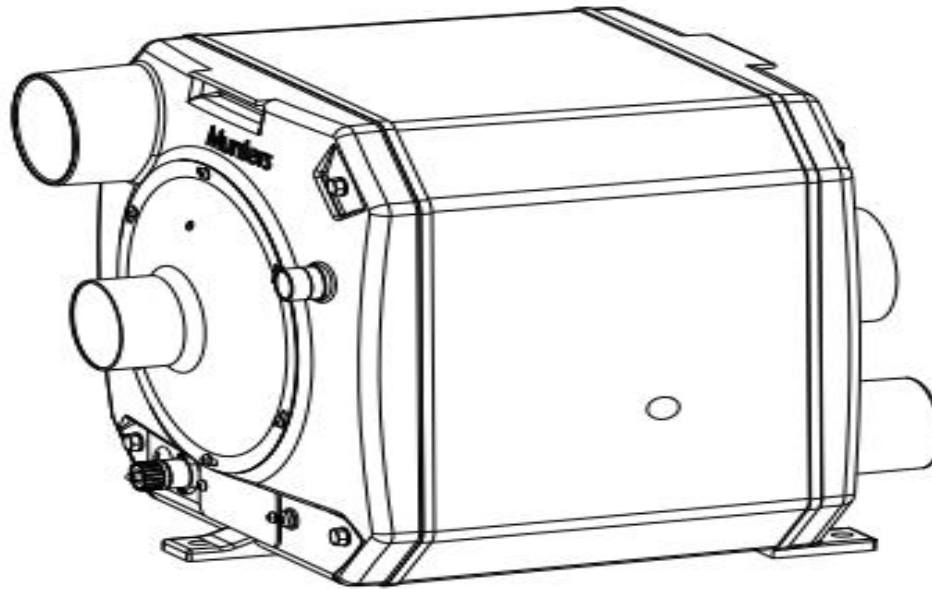
Part Number	Type	Dimensions (mm)						Approx. Load Capacity (kg)	Standard Pack Quantity
		D	C	A x B	Ex G	F	H		
491007	7	50	18	60 x 60	45 x 45	6.5	70	55	48
491008	7	60	22	60 x 60	45 x 45	6.5	90	60	40
491009	7	75	23	60 x 60	45 x 45	6.5	106	60	36
491010	7	80	22	60 x 60	45 x 45	6.5	109	60	36
491011	7	100	27	78 x 70	60 x 50	8.3	134	80	12
494768	8	80	30	100 x 84	80 x 60	9	108	100	16
494770	8	100	30	100 x 84	80 x 60	9	127	110	12
494771	8	125	39	100 x 84	80 x 60	9	155	116	10
498820	8	150	40	100 x 84	80 x 60	9	184	180	6
499662	8	150	48	135 x 113	105 x 80	11	188	330	4
499663	8	200	60	135 x 114	105 x 80	12.3	240	600	2

SR5629 - Wheel Only

Part Number	Type	Dimensions (mm)				Approx. Load Capacity (kg)	Standard Pack Quantity
		D	C	F	M		
491138	9	50	17	8	21.5	55	48
491139	9	60	22	10	27	60	48
491140	9	75	23	8	28	80	48
491141	9	80	22	10	27	80	48
491142	9	100	27	12	32	90	44
1337480	9	125	27	12	32	122	20

Compatible with SR600-SR614 castors
N.B. Styles may vary

M120

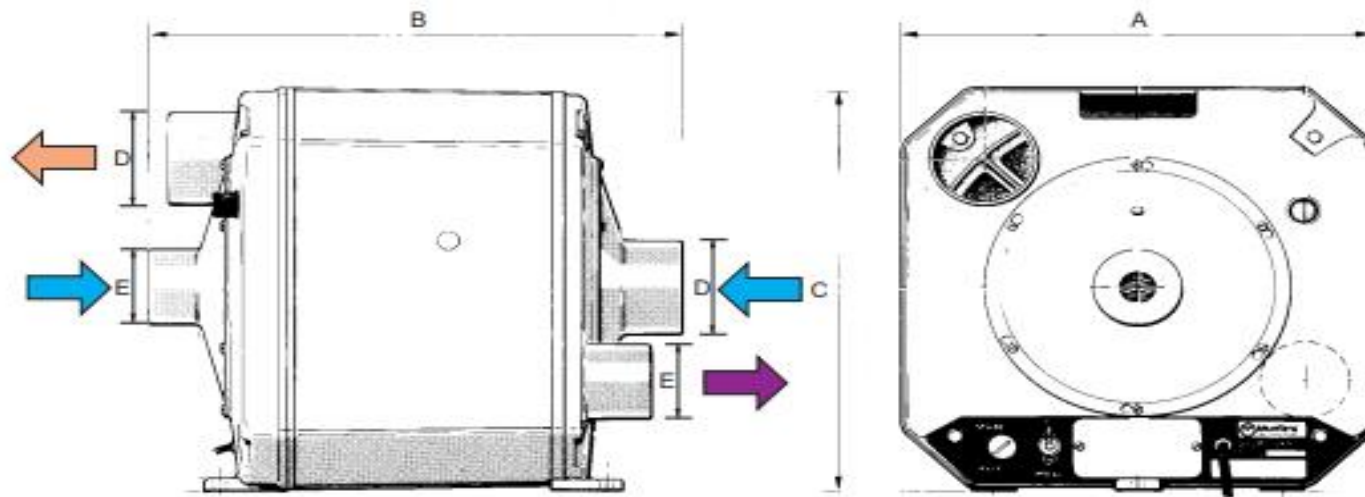


Desiccant dehumidifier

Model M120

Diagram measurements are for reference only.

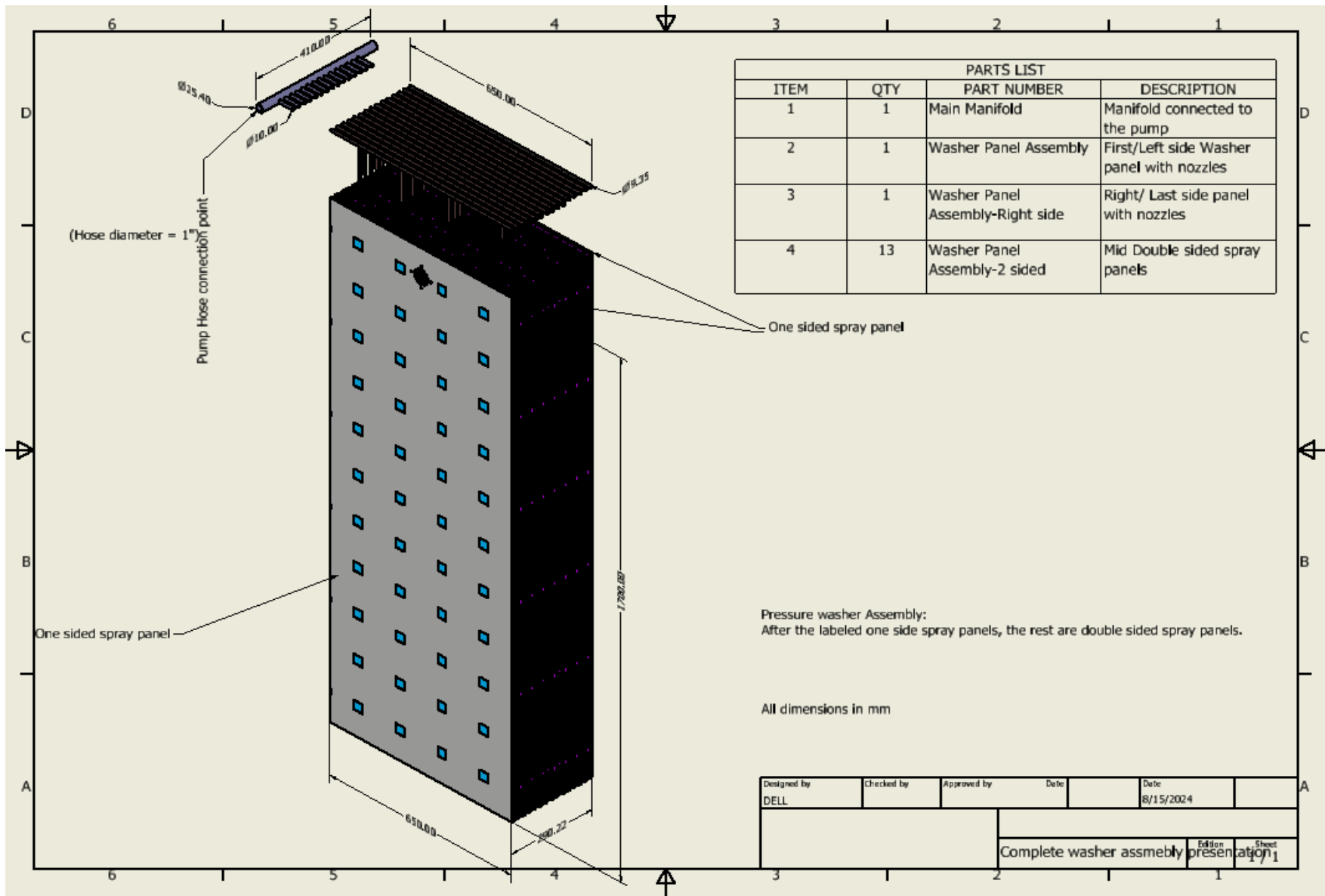
Scaled and dimensioned AutoCAD drawings are available in Munters' DryCap program.

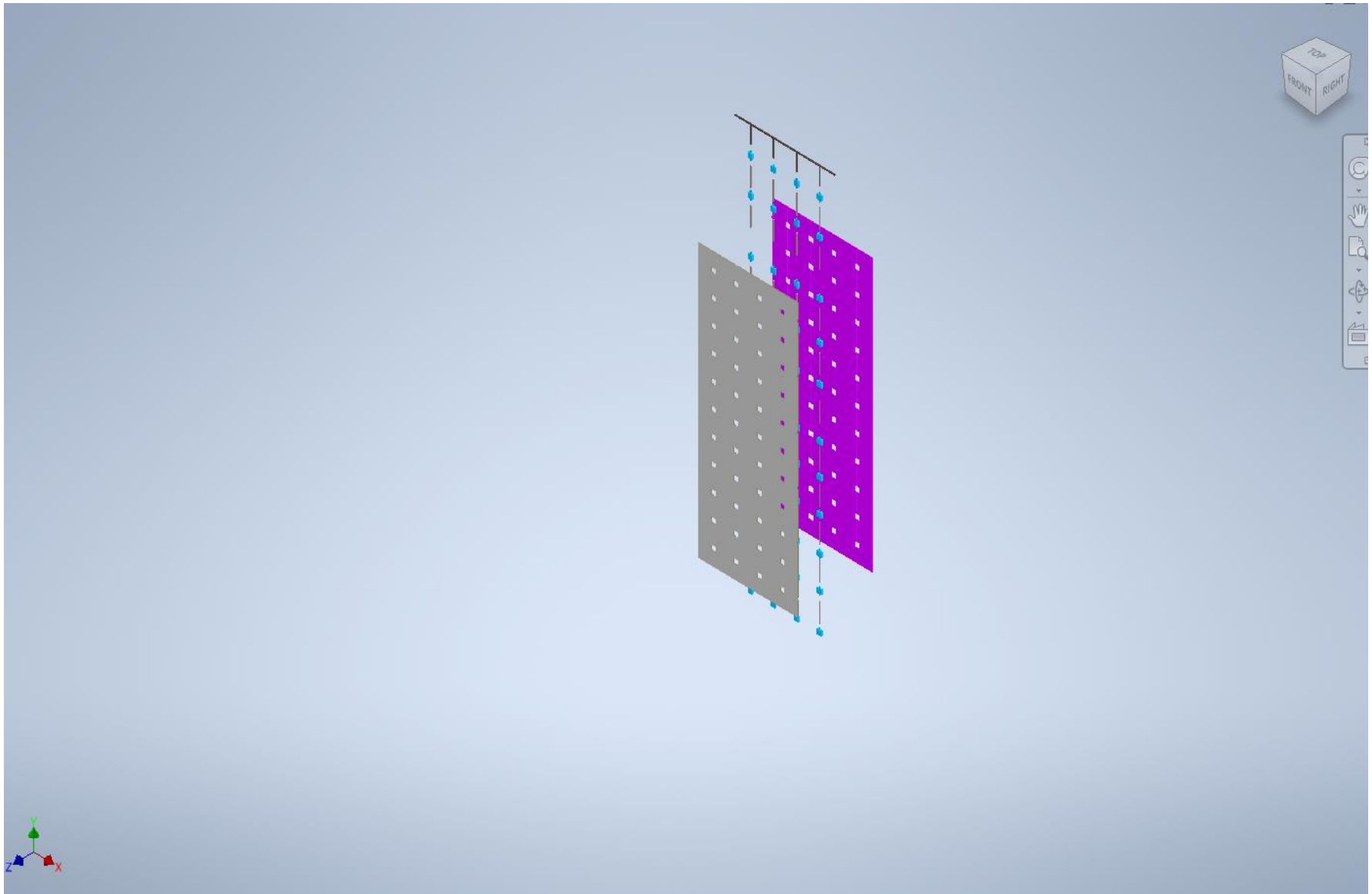


Width (A)	Depth (B)	Height (C)	Diam. (D)	Diam. (E)	Weight
425 mm	481 mm	425 mm	100 mm	80 mm	26 kg

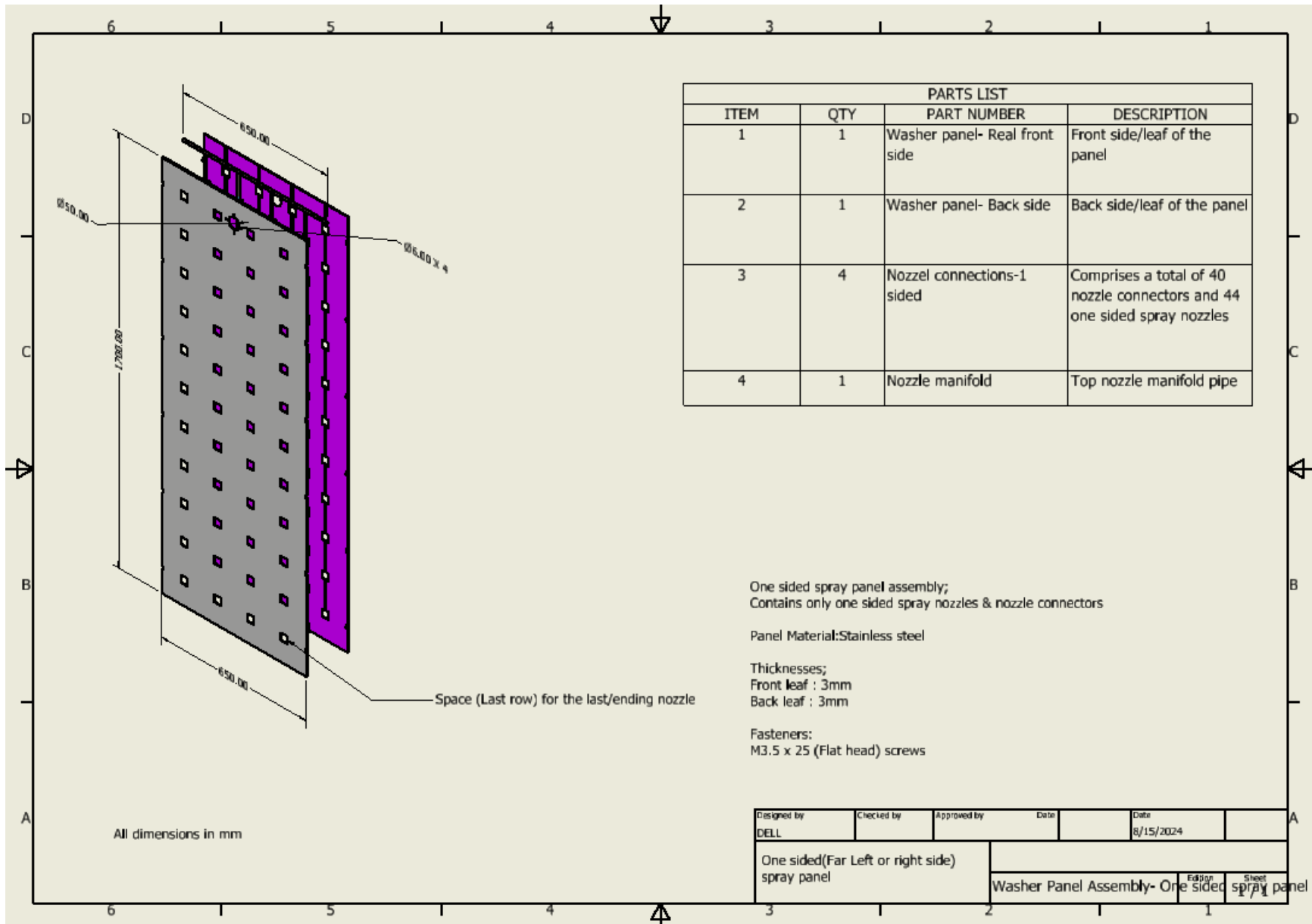
MAKER: Munters Rotor Technology

<https://www.munters.com/en-us/products-cms/dehumidifiers/m-series/>





Panel pressure washer exploded view



PARTS LIST			
ITEM	QTY	PART NUMBER	DESCRIPTION
1	1	Washer panel- Real front side	Front side/leaf of the panel
2	1	Washer panel- Back side	Back side/leaf of the panel
3	4	Nozzel connections-1 sided	Comprises a total of 40 nozzle connectors and 44 one sided spray nozzles
4	1	Nozzle manifold	Top nozzle manifold pipe

One sided spray panel assembly;
Contains only one sided spray nozzles & nozzle connectors

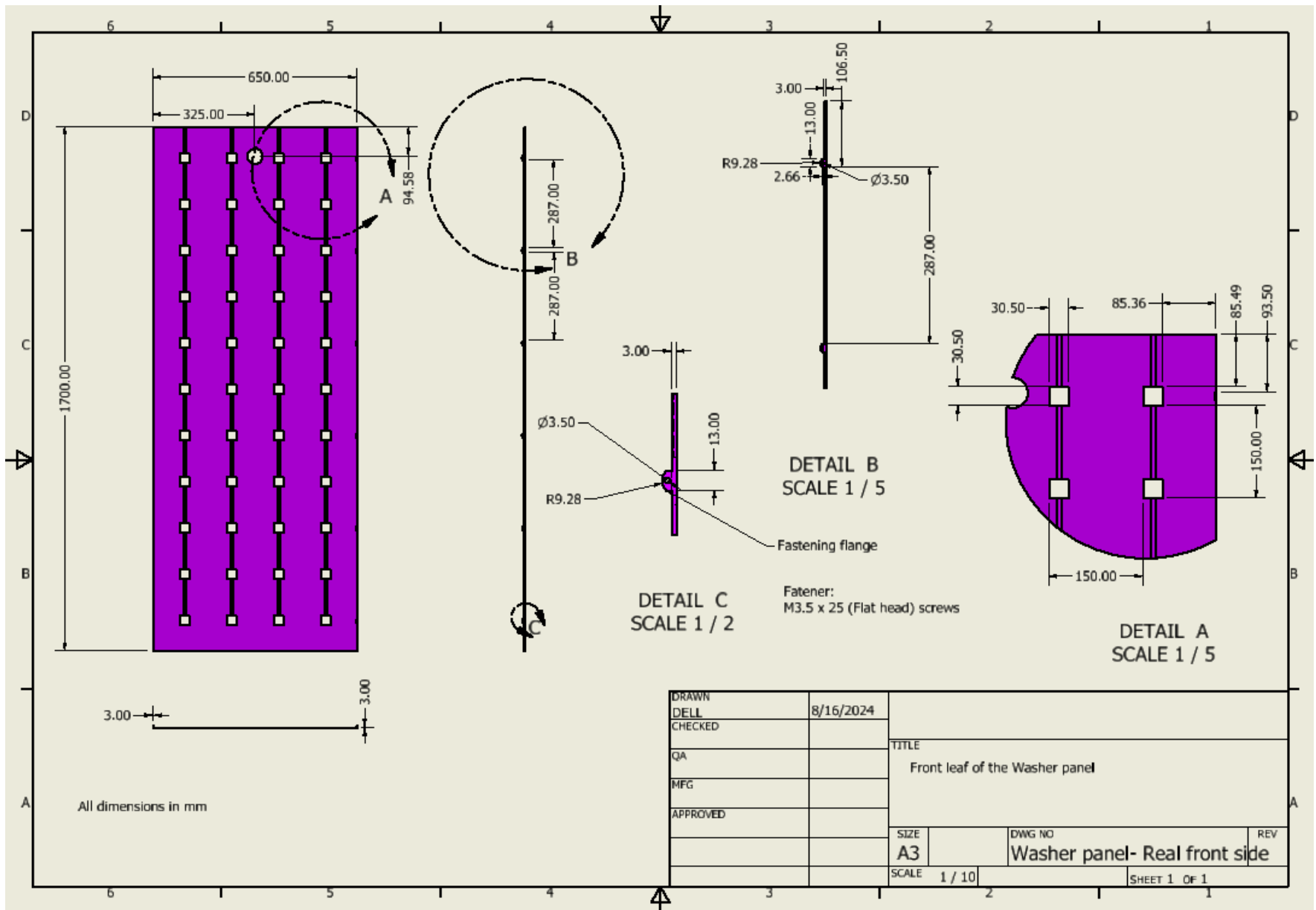
Panel Material:Stainless steel

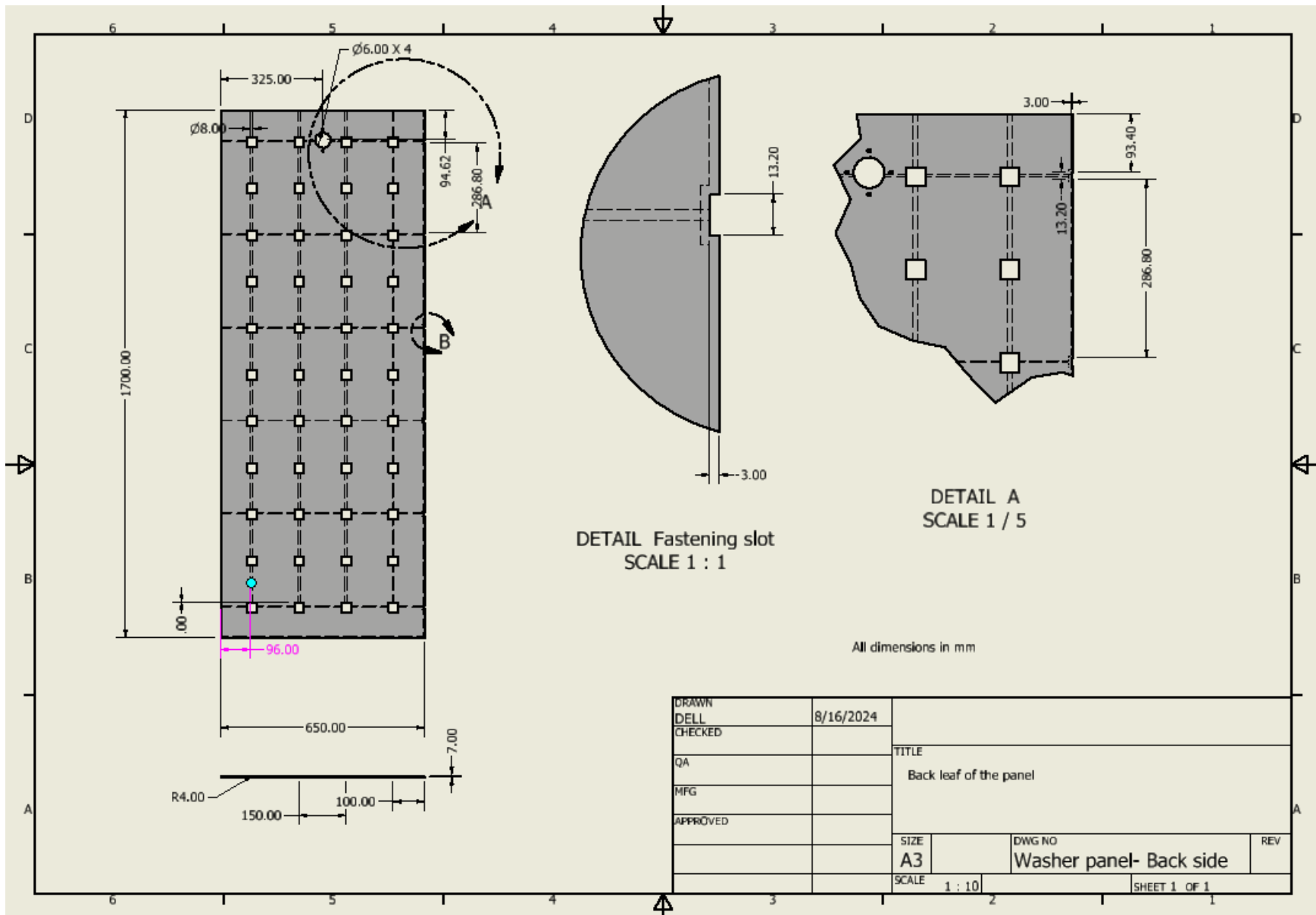
Thicknesses;
Front leaf : 3mm
Back leaf : 3mm

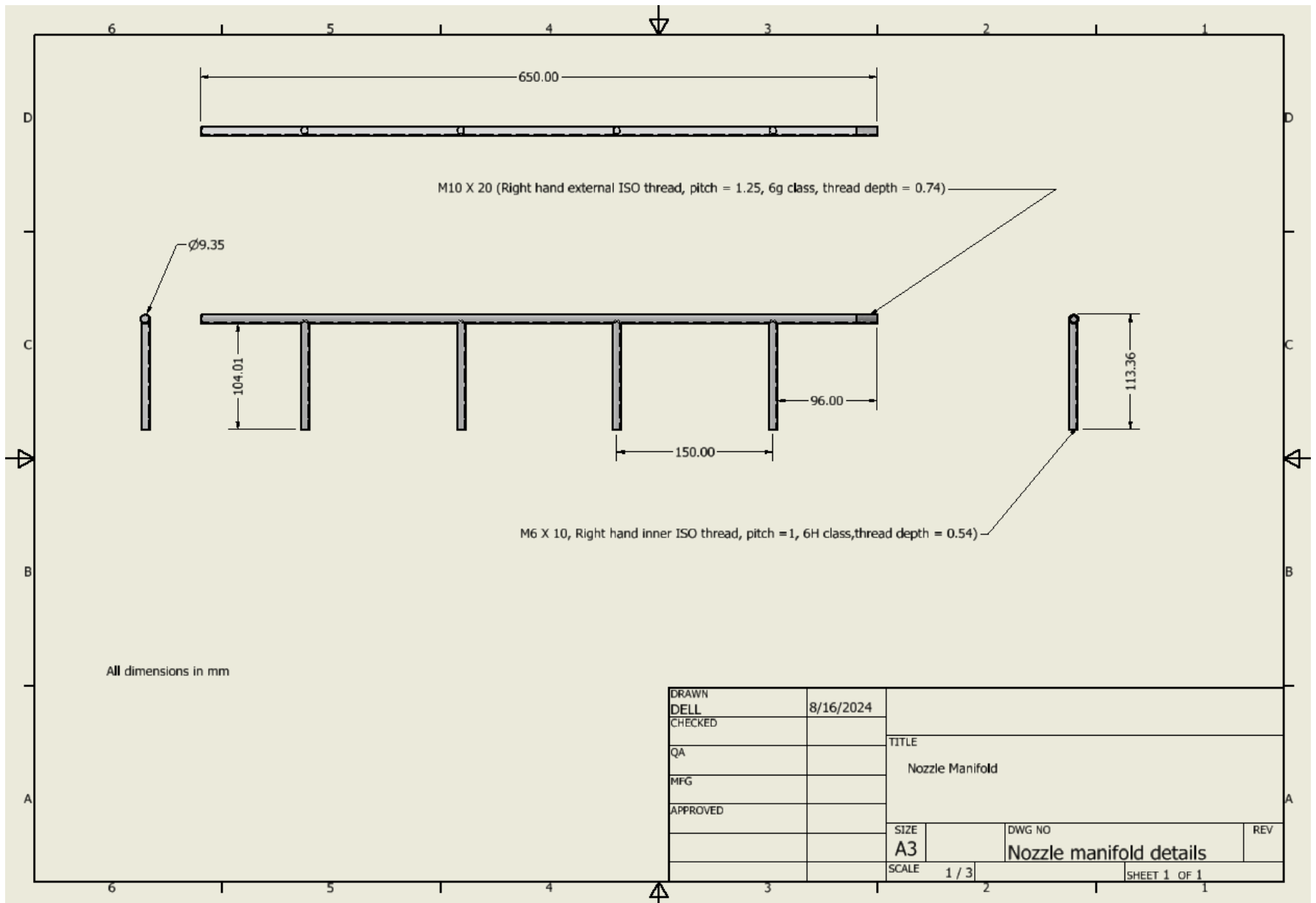
Fasteners:
M3.5 x 25 (Flat head) screws

All dimensions in mm

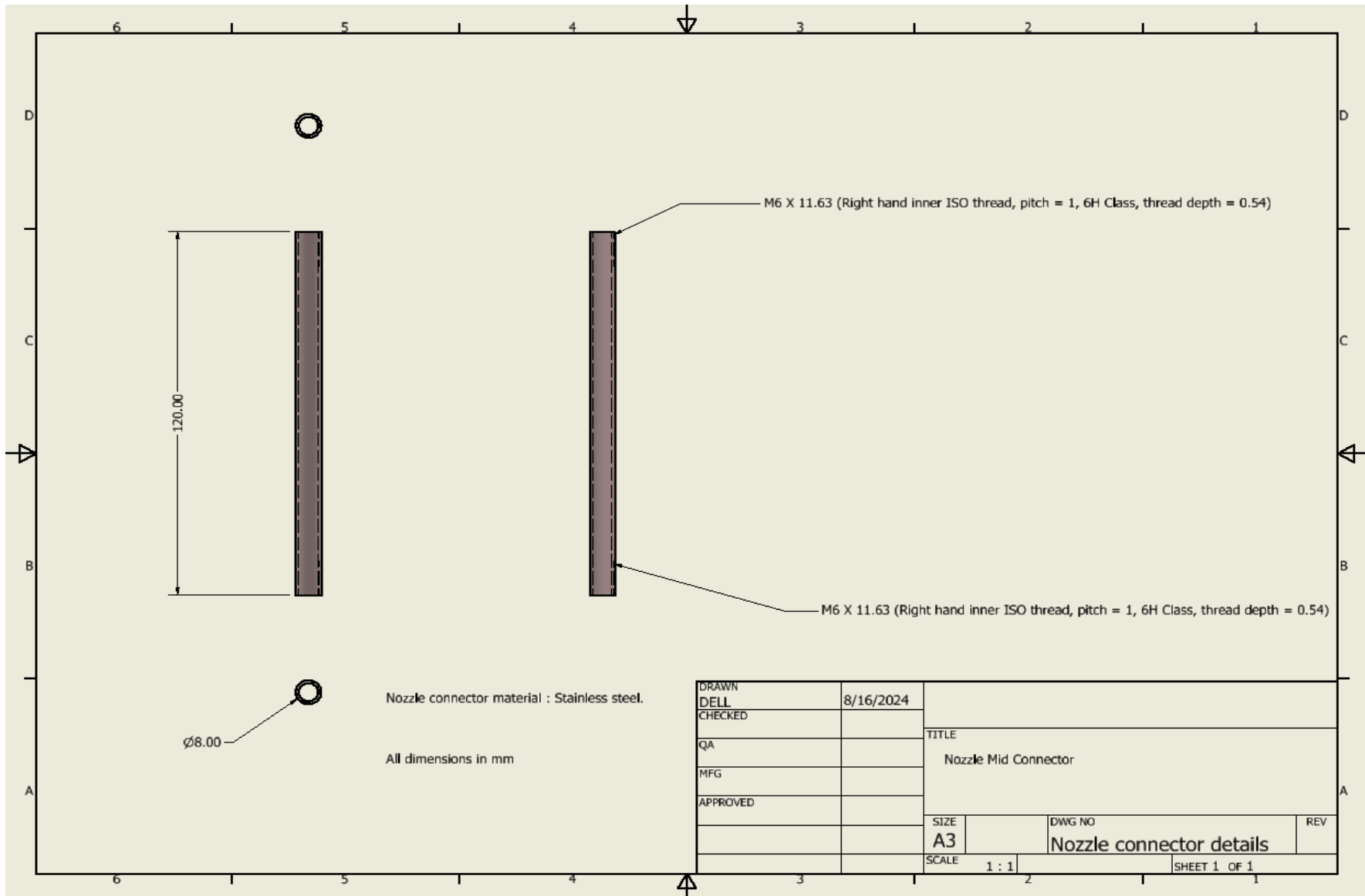
Designed by DELL	Checked by	Approved by	Date 8/15/2024
One sided(Far Left or right side) spray panel		Washer Panel Assembly- One sided spray panel	
		Editor	Sheet

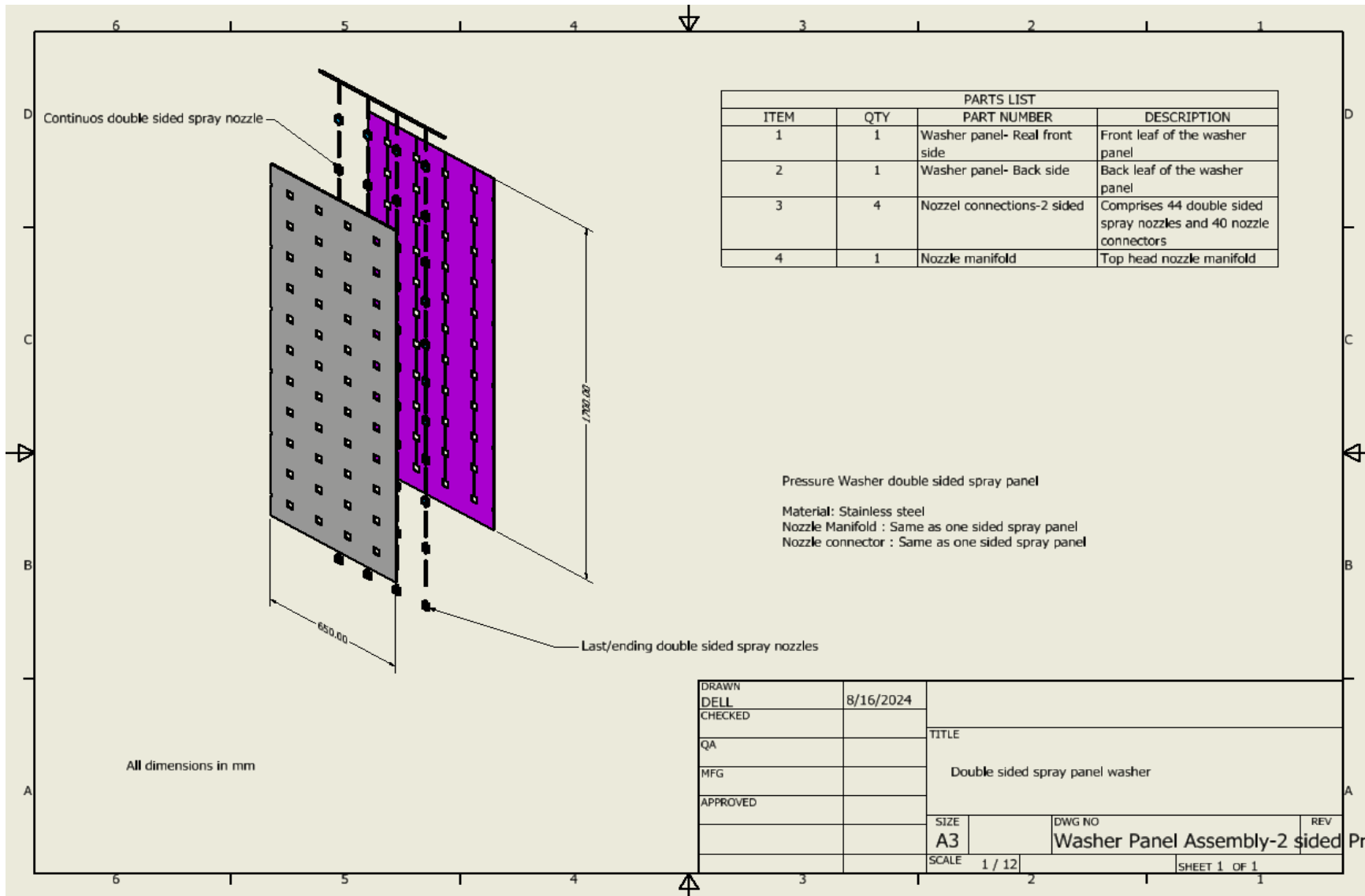






DRAWN	8/16/2024	TITLE	
CHECKED		Nozzle Manifold	
QA		SIZE	DWG NO
MFG		A3	Nozzle manifold details
APPROVED		SCALE	REV
		1 / 3	SHEET 1 OF 1





PARTS LIST			
ITEM	QTY	PART NUMBER	DESCRIPTION
1	1	Washer panel- Real front side	Front leaf of the washer panel
2	1	Washer panel- Back side	Back leaf of the washer panel
3	4	Nozzel connections-2 sided	Comprises 44 double sided spray nozzles and 40 nozzle connectors
4	1	Nozzle manifold	Top head nozzle manifold

Pressure Washer double sided spray panel
 Material: Stainless steel
 Nozzle Manifold : Same as one sided spray panel
 Nozzle connector : Same as one sided spray panel

DRAWN	8/16/2024	TITLE Double sided spray panel washer	
CHECKED			
QA			
MFG			
APPROVED		SIZE A3	DWG NO Washer Panel Assembly-2 sided
		SCALE 1 / 12	REV
		SHEET 1 OF 1	

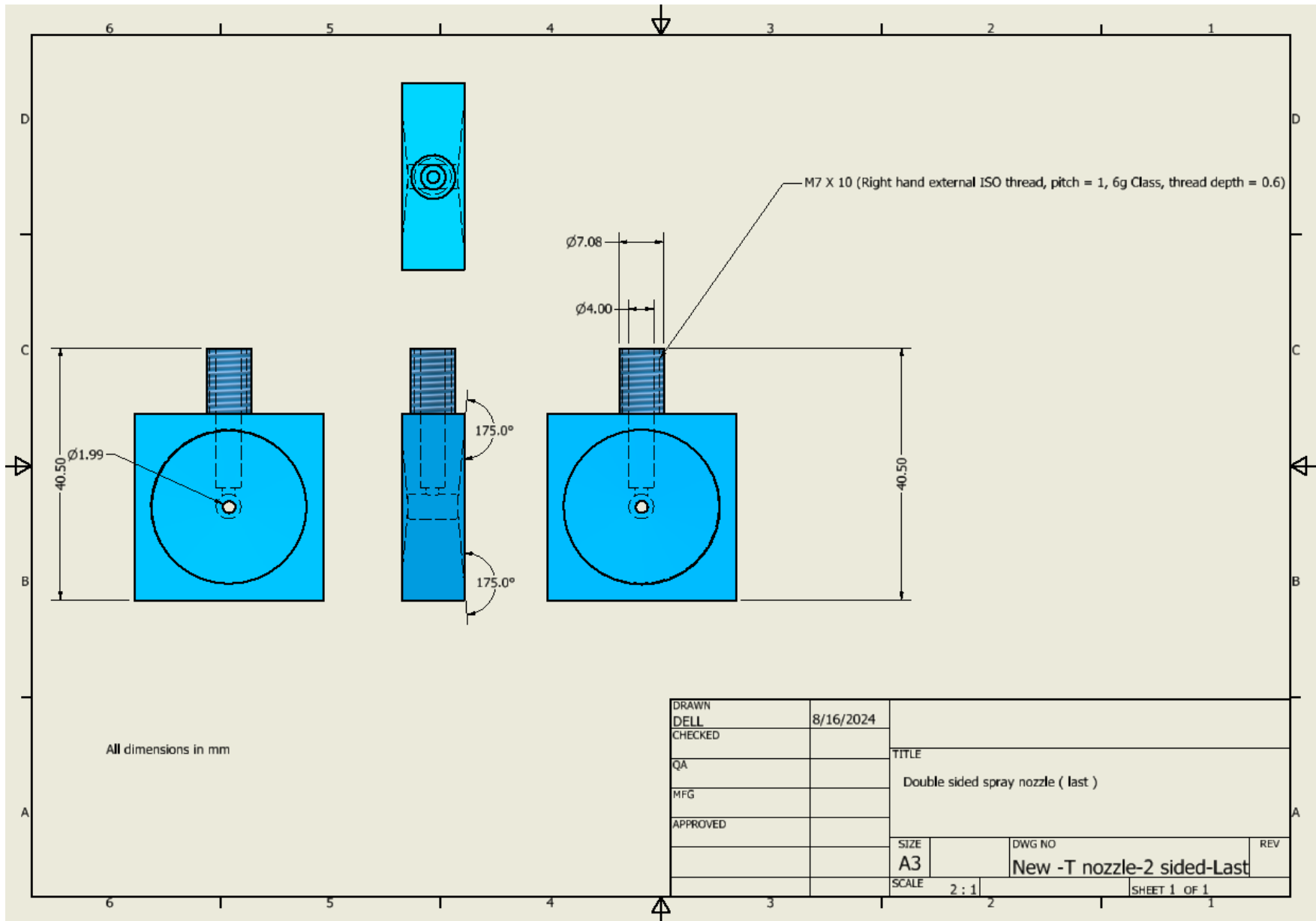


Table 1: DIFFERENT PANEL ARRANGEMENTS WITH REQUIRED PUMP POWER

Panel arrangements	Pump Power range	Pressure head		Pump type		Maker	
		(65psi) (gpm)	L/min	m3/hr			
5	26 hp	538.4	2038.08	122.3	46 m	NBE65-200/198 AAF2AESBQQEQWB	GRUNDFOS https://www.grundfos.com/
10	52-58 hp	1884.4	4585.68	275.1408	46 m		
15	78 – 90 hp	1211.4	7140	428.4	46 m		
20	104 – 122 hp	2557.4	9680.88	580.9	46 m		

Note: Please, get in touch with water pump makers for custom pump solutions for either 10 or 15 panels.

Table 2: DIFFERENT PANEL ARRANGEMENTS WITH REQUIRED AIR BLOWER POWER

Panel arrangements	Blower Motor Power	Required Air flow rate	Air velocity & efficiency		Maker	Website
		CFM	fpm		P-Series	
5	0.2 hp	629.68876	1000	60%	CUSTOM CENTRIFUGAL AIR MOVERS	XPOWER https://xpower.com/product-category/air-movers/centrifugal-air-movers/
10	0.35 hp	1,329.34294	1000	60%		
15	0.5 hp	2,028.99711	1000	60%		

Note: Please, get in touch with XPOWER Air mover manufacturer for custom versions of “P-series” of air movers for the 5, 10 or 15 panels according to the unit dimensions in the drawings.