

6 5 4 3 2 1

D

D

C

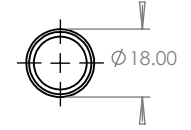
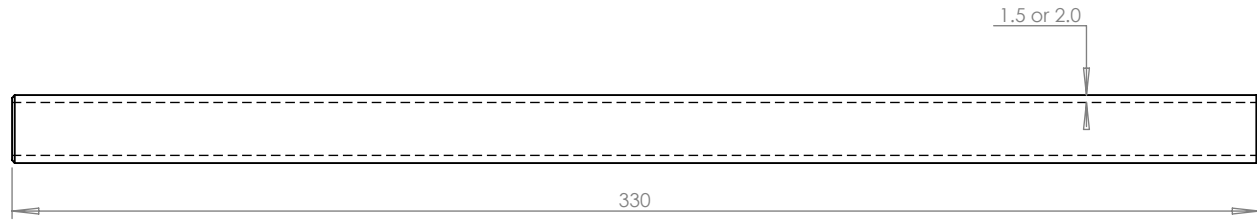
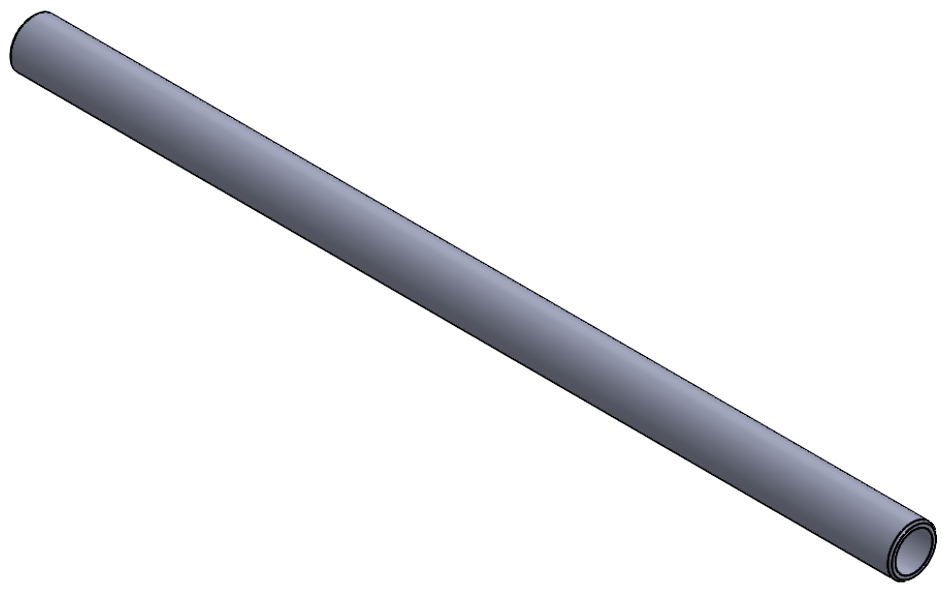
C

B

B

A

A



Stock 18mm x 1.5mm or 2mm Wall tubing cut to length and chamfered on each end. Chamfers are cosmetic only. Not critical to hold specific dimensions (can be done by hand).

UNLESS OTHERWISE SPECIFIED: DIMENSIONS ARE IN MILLIMETERS TOLERANCES: ANGULAR: $\pm 0.5^\circ$ BEND ± 0.5 ONE PLACE DECIMAL ± 0.5 TWO PLACE DECIMAL ± 0.25 THREE PLACE DECIMAL ± 0.125 MATERIAL 6061 or 6063 Tubing - 18mm OD 1.5mm or 2.0mm Wall FINISH Type II Anodize Black DO NOT SCALE DRAWING		NAME	DATE	TITLE		
	DRAWN	BP	04/25/2024	18mm Mounting Rail		
	CHECKED	xxxx	xxxx			
	PROPRIETARY AND CONFIDENTIAL			SIZE	PART #	REV
	THE INFORMATION CONTAINED IN THIS DRAWING IS THE SOLE PROPERTY OF PASQ ADVENTURE, LLC. ANY REPRODUCTION IN PART OR AS A WHOLE WITHOUT WRITTEN PERMISSION IS PROHIBITED.			A	01-450-001	3
	SCALE: 1:2	WEIGHT:	SHEET 1 OF 1			

6 5 4 3 2 1